

AUSTRALIAN AMALGAMATED TERMINALS PTY LTD (AAT)

BI-ANNUAL COMPLIANCE REPORT  
DATE OF REPORT: 17th February 2022

REPORT PERIOD: 1st JULY 2021 TO 31ST DECEMBER 2021

KPI	Port Kembla			Brisbane		
	Average time	Explanation	Average time	Explanation		
<b>KPI 1 Truck Turnaround Time</b>  Average time spent at the terminal picking up or delivering cargo, measured from gate entry through to departure from terminal	<b>Quarter 3</b>		<b>Quarter 3</b>			
	Automobiles - Qube	46 mins	Automobiles - Qube	39 mins		
	Automobiles - non-Qube	46 mins	Automobiles - non-Qube	40 mins		
	Breakbulk - Qube	1 hr 11 mins	Breakbulk - Qube	1 hr 09 mins		
	Breakbulk - non-Qube	1 hr 16 mins	Breakbulk - non-Qube	1 hr 01 mins		
	<b>Quarter 4</b>		<b>Quarter 4</b>			
	Automobiles - Qube	47 mins	Automobiles - Qube	42 mins		
	Automobiles - non-Qube	42 mins	Automobiles - non-Qube	40 mins		
	Breakbulk - Qube	1 hr 15 mins	Breakbulk - Qube	1 hr 11 mins		
	Breakbulk - non-Qube	1 hr 20 mins	Breakbulk - non-Qube	1 hr 10 mins		
	<b>KPI 2 Yard Dwell Time - Imports</b>	Average time	Explanation	Average time	Explanation	
		<b>Quarter 3</b>		<b>Quarter 3</b>		
Automobiles - Qube		127 hrs 07 mins	Automobiles - Qube	87 hrs 13 mins		
Automobiles - non-Qube		148 hrs 33 mins	Automobiles - non-Qube	89 hrs 50 mins		
Breakbulk - Qube		77 hrs 48 mins	Breakbulk - Qube	123 hrs 13 mins		
Breakbulk - non-Qube		86 hrs 39 mins	Breakbulk - non-Qube	109 hrs 36 mins		
<b>Quarter 4</b>			<b>Quarter 4</b>			
Automobiles - Qube		100 hrs 48 mins	Automobiles - Qube	84 hrs 59 mins		
Automobiles - non-Qube		66 hrs 29 mins	Automobiles - non-Qube	69 hrs 51 mins		
Breakbulk - Qube		110 hrs 55 mins	Breakbulk - Qube	131 hrs 06 mins		
Breakbulk - non-Qube		73 hrs 14 mins	Breakbulk - non-Qube	67 hrs 14 mins		
				AAT handled record volume of steel product during this period, a majority of which was stevedored by Qube. The higher dwell time was largely due to delivery delays as a result of this volume of cargo and managing the limited terminal space.		
<b>KPI 3 Yard Dwell Time - Exports</b>  Average time export cargo units stayed at the designated cargo pick-up area of the terminal waiting to be loaded onto a vessel, once the cargo is ready to be loaded.	Average time	Explanation	Average time	Explanation		
	<b>Quarter 3</b>		<b>Quarter 3</b>			
	Automobiles - Qube	146 hrs 20 mins	Automobiles - Qube	182 hrs 21 mins		
	Automobiles - non-Qube	192 hrs 21 mins	Automobiles - non-Qube	152 hrs 22 mins		
	Breakbulk - Qube	358 hrs 0 mins	Breakbulk - Qube	180 hrs 22 mins		
	Breakbulk - non-Qube	417 hrs 11 mins	Breakbulk - non-Qube	153 hrs 10 mins		
	<b>Quarter 4</b>		<b>Quarter 4</b>			
	Automobiles - Qube	201 hrs 22 mins	Automobiles - Qube	241 hrs 46 mins		
	Automobiles - non-Qube	164 hrs 39 mins	Automobiles - non-Qube	142 hrs 24 mins		
	Breakbulk - Qube	496 hrs 08 mins	Breakbulk - Qube	265 hrs 47 mins		
	Breakbulk - non-Qube	293 hrs 09 mins	Breakbulk - non-Qube	174 hrs 52 mins		
				Due to the volume of transshipment cargo handled during this period. Shipping lines electing to discharge cargo for (PKL, MEL, FAE) in Brisbane to avoid vessel delays / berth congestion down the East coast of Australia. Exports dwell times were further extended during this period due to BMSB related issues. Armacup (Qube client) elected not to load transshipment cargo onto the "Tannhauser" due to concerns about possible BMSB contamination. The overall dwell time for this transshipment cargo (which included 325 Vehicles, 304 R/T of General Cargo and 137 RoRo units) was 31 days.		
			Higher export dwell time attributed to increased volume of cargo with early receipt arrangement. Cargo is received in the yard and loaded along with other transshipment cargo to Fremantle.			
			As above			
<b>KPI 4 Berthing Allocation Changes</b>  Number of incidents where there was a delay in start of stevedoring operations due to deviation between planned allocation of berth and actual allocation, where AAT was responsible for such deviation.	Number of Incidents	Explanation	Number of Incidents	Explanation		
	<b>Quarter 3</b>		<b>Quarter 3</b>			
	Qube	Zero	Qube	Zero		
	Non-Qube	Zero	Non-Qube	Zero		
	<b>Quarter 4</b>		<b>Quarter 4</b>			
	Qube	Zero	Qube	Zero		
	Non-Qube	Zero	Non-Qube	Zero		
<b>KPI 5 Mooring Services</b>	Number of Incidents	Explanation	Number of Incidents	Explanation		
	<b>Quarter 3</b>		<b>Quarter 3</b>			

Number of incidents where there was a delay in the mooring of vessels due to a deviation between planned berth allocation and actual allocation, where AAT was responsible for such deviation.	Qube	Zero		Qube	Zero	
	Non-Qube	Zero		Non-Qube	Zero	
	<b>Quarter 4</b>			<b>Quarter 4</b>		
	Qube	Zero		Qube	Zero	
	Non-Qube	Zero		Non-Qube	Zero	
<b>KPI 6 Allocation of first point of rest area</b>  Data showing, for each cargo shipment:  a) berth allocated to vessel b) allocated storage area in the Terminal Layout Plan for the cargo's  <b>This data can be set out in an Attachment to this Compliance Report</b>			Explanation			Explanation
			Refer Attachment A			Refer Attachment A
<b>KPI 7 Equipment Availability</b>  Number of deviations between AAT equipment requested by stevedore or by shipping line and actual machinery provided (including standard of equipment, age, type and capacity)			Explanation			Explanation
	<b>Quarter 3</b>			<b>Quarter 3</b>		
	Qube	Zero		Qube	Zero	
	Non-Qube	Zero		Non-Qube	Zero	
	<b>Quarter 4</b>			<b>Quarter 4</b>		
	Qube	Zero		Qube	Zero	
Non-Qube	Zero		Non-Qube	Zero		
<b>KPI 8 Mechanical Support</b>  Average time lost in excess of one hour due to failure of AAT in providing mechanical breakdown support, reported from the time Mechanical Engineer officially notified to the time the issue was resolved.			Explanation			Explanation
	<b>Quarter 3</b>			<b>Quarter 3</b>		
	Qube	Zero		Qube	Zero	
	Non-Qube	Zero		Non-Qube	Zero	
	<b>Quarter 4</b>			<b>Quarter 4</b>		
	Qube	Zero		Qube	5 hrs	Pacific 2000 (contactor fault) from 1300-
Non-Qube	Zero		Non-Qube	Zero	1800hrs on 27th. Qube switched to Liebherr during this time.	
<b>KPI 9 Cargo dwell time over free time/long terms storage</b>  Time cargo units stay over free time, excluding Customs, DAFF and customer hold.			Explanation			Explanation
	<b>Services to Qube</b>			<b>Services to Qube</b>		
	<b>Quarter 3</b>			<b>Quarter 3</b>		
	Total Cargo Units	60,763		Total Cargo Units	88,647	
	Units staying over free time	18,104		Units staying over free time	7,747	
	Units over free time due Customs/Daff or customer	306		Units over free time due Customs/Daff or customer	27	
	Units staying over free time excluding Customs etc. as percentage of total units	29%		Units staying over free time excluding Customs etc. as percentage of total units	9%	
	<b>Services to Non-Qube</b>			<b>Services to Non-Qube</b>		
	Total Cargo Units	24,349		Total Cargo Units	26,901	
	Units staying over free time	8,592		Units staying over free time	6,630	
	Units over free time due Customs/Daff or customer	43		Units over free time due Customs/Daff or customer	6	
	Units staying over free time excluding Customs etc. as percentage of total units	35%		Units staying over free time excluding Customs etc. as percentage of total units	25%	
	<b>Services to Qube</b>			<b>Services to Qube</b>		
	<b>Quarter 4</b>			<b>Quarter 4</b>		
	Total Cargo Units	49,728		Total Cargo Units	102,991	
	Units staying over free time	8,212		Units staying over free time	8,543	
	Units over free time due Customs/Daff or customer	109		Units over free time due Customs/Daff or customer	178	
	Units staying over free time excluding Customs etc. as percentage of total units	16%		Units staying over free time excluding Customs etc. as percentage of total units	8%	
	<b>Services to Non-Qube</b>			<b>Services to Non-Qube</b>		
	Total Cargo Units	15,092		Total Cargo Units	24,686	
Units staying over free time	2,323		Units staying over free time	5,131		
Units over free time due Customs/Daff or customer	10		Units over free time due Customs/Daff or customer	8		
Units staying over free time excluding Customs etc. as percentage of total units	15%		Units staying over free time excluding Customs etc. as percentage of total units	21%		
<b>KPI 10 Confidentiality and ring-fencing</b>  Number of complaints received by AAT concerning non-compliance with Clause 6 of the Undertaking  Number of instance of breaches of Clause 6  AAT's response to the complaints and/or breaches			Explanation			Explanation
	<b>Quarter 3</b>			<b>Quarter 3</b>		
	Complaints for Non-Compliance with Clause 6	Zero		Complaints for Non-Compliance with Clause 6	Zero	
	Services to Qube	Zero		Services to Qube	Zero	
	Services to non-Qube	Zero		Services to non-Qube	Zero	
	Breaches of Clause 6 Clause 6			Breaches of Clause 6 Clause 6		
	Services to Qube	Zero		Services to Qube	Zero	
	Services to non-Qube	Zero		Services to non-Qube	Zero	
	<b>Quarter 4</b>			<b>Quarter 4</b>		
	Complaints for Non-Compliance with Clause 6			Complaints for Non-Compliance with Clause 6		
	Services to Qube	Zero		Services to Qube	Zero	
	Services to non-Qube	Zero		Services to non-Qube	Zero	

	Breaches of Clause 6 Clause 6			Breaches of Clause 6 Clause 6		
	Services to Qube	Zero		Services to Qube	Zero	
	Services to non-Qube	Zero		Services to non-Qube	Zero	
<b>KPI 11 Complaints</b>		Number of Complaints	Explanation		Number of Complaints	Explanation
	<b>Quarter 3</b>			<b>Quarter 3</b>		
	Complaints Under Price and non-Price Dispute Resolution Process			Complaints Under Price and non-Price Dispute Resolution Process		
	Services to Qube	Zero		Services to Qube	Zero	
	Services to non-Qube	Zero		Services to non-Qube	Zero	
	Details of complaint and outcome	Zero		Details of complaint and outcome	Zero	
	<b>Quarter 4</b>			<b>Quarter 4</b>		
	Complaints Under Price and non-Price Dispute Resolution Process			Complaints Under Price and non-Price Dispute Resolution Process		
	Services to Qube	Zero		Services to Qube	Zero	
	Services to non-Qube	Zero		Services to non-Qube	Zero	
	Details of complaint and outcome	Zero		Details of complaint and outcome	Zero	

**PART B: TERMINAL LAYOUT PLAN FOR EACH TERMINAL**

See attachment Part B

**PART C: TERMINAL USERS IN WHICH QUBE OR A QUBE RELATED ENTITY HAS AN INTEREST**

See attachment Part C

Attachment A

## **KPI 6**

Allocation of first point of rest

Fisherman Islands

Jul 1 – Dec 31, 2021

**JULY**

KPI 6 - Fisherman Islands July

NUMBER	DATE	STEVE-DORE	VESSEL	VOYAGE	STARTING SHIFT	BERTH #	BERTH DELAY	LAYDOWN	MACHINERY REQUEST RECEIVED	MACHINERY REQUEST FILLED	MACHINERY ISSUES	NOTES
1	1500/1	QP	MERLIN ARROW	0421	MIDNIGHT	3	NIL	NS, J, F	YES	YES	NIL	
2	0300/2	LINX	HOEGH DETROIT	100	DAY	1	NIL	A & C	YES	YES	NIL	
3	0200/4	QP	MORNING LENA	EE112/OE112	EVE	1	NIL	A & C	YES	YES	NIL	
4	0200/4	QP	TURANDOT	2112	DAY	1	NIL	A & C	YES	YES	NIL	
5	1600/4	LINX	BBC CARIBBEAN	6	MIDNIGHT	2	NIL	B	YES	YES	NIL	
6	2030/4	QP	TRIUMPH ACE	160	DAY	2	24HRS	D	YES	YES	NIL	Awaiting departure of BBC Caribbean (Agility - Linx). Delayed berthing due to Carnation Ace not finishing on time; labour was taken off Morning Clara to finish Triumph Ace in allocated time to allow Hoegh Traveller to work on the midnight shift.
7	1100/5	QP	MORNING CLARA	2162	DAY	1	16HRS	A	YES	YES	NIL	Awaiting departure of Turandot (Armacup - Qube).
8	1500/5	QP	CARNATION ACE	73	MIDNIGHT	3	NIL	E	YES	YES	NIL	At 0700hrs - had 50 units to discharge and lashing to do; ETD dropping back meant that berthing of Triumph Ace went back to 1100hrs which is when labour was due to commence. Labour was taken off Morning Clara to finish the Carnation Ace; and additional labour was taken off Morning Clara to finish Triumph Ace in time for Hoegh Traveller to berth for midnight shift and Shaoshing to berth next day.
9	1600/5	LINX	HOEGH TRAVELLER	28	MIDNIGHT	2	24HRS	A & C	YES	YES	NIL	Awaiting departure of Triumph Ace (MOL - Qube)
10	0100/6	LINX	HOEGH MASAN	162	DAY	1	24HRS	C	YES	YES	NIL	Awaiting departure of Morning Clara (Armacup - Qube)
11	0200/6	LINX	HERCULES LEADER	78	EVE	1	24HRS	A, C & D	YES	YES	NIL	Awaiting departure of Hoegh Masan (Hoegh - Linx)
12	2330/5	QP	SHAOSHING	2117S/2117N	DAY	2	24HRS	B	YES	YES	NIL	Awaiting departure of Hoegh Traveller (Hoegh - Linx). On 2300/7th - 1 x container not clear to load (l/r from Sydney). Container cleared approx 0800/8th. Vessel depayed departure to 0930/8th which delayed Tarago berthing to 1100hrs when labour was due to start.
13	1400/6	QP	TARAGO	EF111/OF111	EVE	2	40HRS	C	YES	YES	NIL	Delayed berthing, awaiting Shaoshing to complete load and depart.
14	1300/6	LINX	TRANS FUTURE 7	130	DAY	1	56HRS	A & C	YES	YES	NIL	Awaiting departure of Hercules Leader (NYK - Linx)
15	1700/6	LINX	FILIA ARIEA	80B	DAY	3	NIL	G	YES	YES	NIL	
16	0600/7	QP	SHANTUNG	2109S/2109N	DAY	2	40HRS	B	YES	YES	NIL	Awaiting departure of Tarago (WWI - Qube)
17	2100/7	QP	PRIMROSE ACE	131	DAY	1	48HRS	A, C, D & M	YES	YES	NIL	Awaiting departure of Trans Future 7 (Toyofuji - Linx)
18	0800/10	QP	AAL MELBOURNE	21003	EVE	3	NIL	NS, F & H	YES	YES	NIL	
19	1100/11	QP	GENIUS HIGHWAY	50	EVE	1	24HRS	A, C, D & M	YES	YES	NIL	Awaiting departure of Primrose Ace (MOL - Qube)
20	0600/12	QP	DONG-A METIS	6	EVE	1	24HRS	A & C	YES	YES	NIL	Awaiting departure of Genius Hwy (K-Line - Qube)
21	0300/13	LINX	BBC SEINE	112053	DAY	2	NIL	F	YES	YES	NIL	
22	1100/12	LINX	HOEGH TROVE	149	DAY	1	36HRS	C & D	YES	YES	NIL	Awaiting departure of Dong-A-Metis (MOL - Qube)
23	0900/14	QP	LYDDEN	3	DAY	1	24HRS	A, C & M	YES	YES	NIL	Awaiting departure of Hoegh Trove (Hoegh - Linx)
24	2200/14	QP	GUANGZHOU HIGHWAY	151	DAY	3	NIL	E	YES	YES	NIL	
25	1330/15	QP	WALRUS ACE	22	MIDNIGHT	1	NIL	A, C & M	YES	YES	NIL	
26	0200/18	QP	PASSAMA	2113	DAY	1	NIL	A & C	YES	YES	NIL	
27	0300/18	QP	VALIANT ACE	75	EVE	2	NIL	D	YES	YES	NIL	
28	0800/18	QP	LAVENDER ACE	77	EVE	1	24HRS	A, C & D	YES	YES	NIL	Awaiting departure of Passama (Armacup - Qube) & yard space
29	1000/20	LINX	FILIA ARIEA	81B	MIDNIGHT	2	NIL	B	YES	YES	NIL	
30	2300/20	LINX	DAIWAN MIRACLE	2102	DAY	3	24HRS	OS & NS	YES	YES	NIL	Awaiting departure of Mercury Leader (NYK - Linx)
31	0200/21	QP	DON JUAN	2113	DAY	1	NIL	A & C	YES	YES	NIL	
32	0300/21	QP	TIJUCA	EF112/AF130	DAY	1	24HRS	C	YES	YES	NIL	Awaiting departure of Don Juan (Armacup - Qube)
33	0400/21	LINX	MERCURY LEADER	37	DAY	3	NIL	E	YES	YES	NIL	
34	0200/23	LINX	DAEDALUS LEADER	93	DAY	1	NIL	A, C & D	YES	YES	NIL	
35	0100/24	LINX	HOEGH TROTTER	26	DAY	1	NIL	A & D	YES	YES	NIL	Vessel ETA 1100/23PS however vessel slowed to 0100/24PS due to Linx labour availability.
36	0100/25	QP	GLOBAL HIGHWAY	44	DAY	1	NIL	D & M	YES	YES	NIL	
37	0600/25	QP	SZECHUEN	2110S/2110N	EVE	2	NIL	B	YES	YES	NIL	
38	1030/26	QP	UNDINE	EE113	MIDNIGHT	1	NIL	A & C	YES	YES	NIL	
39	1230/26	LINX	POSITIVE STAR	180	MIDNIGHT	1	24HRS	D	YES	YES	NIL	Awaiting departure of Szechuen (Swire - Qube)
40	1000/27	QP	TONSBERG	EF113/AF131	MIDNIGHT	2	8HRS	C	YES	YES	NIL	Awaiting departure of Szechuen (Swire - Qube)
41	0700/28	QP	IGUAZU HIGHWAY	32	EVE	1	NIL	A & C	YES	YES	NIL	
42	0800/28	QP	ORCA ACE	26	MIDNIGHT	2	NIL	A & M	YES	YES	NIL	
43	1000/28	QP	BELUGA ACE	29	DAY	1	16HRS	A, C, D & M	YES	YES	NIL	Awaiting departure of Iguazu Hwy (K-Line - Qube)
44	1600/29	LINX	SAGITTARIUS LEADER	35	MIDNIGHT	2	NIL	A, C, E & W	YES	YES	NIL	
45	0400/31	QP	TOKYO CAR	2114	DAY	2	NIL	D & M	YES	YES	NIL	
46	1000/31	LINX	TRANS LEADER	35	EVE	1	NIL	A & C	YES	YES	NIL	
47	1800/31	QP	LIHIR CHIEF	2119S/2123N	DAY	2	8HRS	B	YES	YES	NIL	Awaiting departure of Tokyo Car (Armacup - Qube)

**Legend - Berth # and Laydown**

- Primary
- Secondary
- Tertiary

SUMMARY	LINX	QUBE	COMMENT
<b>TOTAL VESSELS FOR MONTH</b>	<b>17</b>	<b>30</b>	
<b>GREEN BERTH (Primary)</b>	<b>17</b>	<b>30</b>	
<b>ORANGE BERTH (Secondary)</b>	<b>0</b>	<b>0</b>	
<b>RED BERTH (Tertiary)</b>	<b>0</b>	<b>0</b>	
<b>GREEN LAYDOWN (Primary)</b>	<b>11</b>	<b>20</b>	
<b>ORANGE LAYDOWN (Secondary)</b>	<b>5</b>	<b>10</b>	
<b>RED LAYDOWN (Tertiary)</b>	<b>1</b>	<b>0</b>	
<b>NUMBER OF BERTHING DELAYS</b>	<b>7</b>	<b>14</b>	
<b>NUMBER OF MACHINERY ISSUES/REQUESTS NOT MET</b>	<b>0</b>	<b>0</b>	

**AUGUST**

KPI 6 - Fisherman Islands August

NUMBER	DATE	STEVE-DORE	VESSEL	VOYAGE	STARTING SHIFT	BERTH #	BERTH DELAY	LAYDOWN	MACHINERY REQUEST RECEIVED	MACHINERY REQUEST FILLED	MACHINERY ISSUES	NOTES
1	1000/1	QP	SUNGKIANG	2105S	DAY	3	16HRS	NS & F	YES	YES	NIL	Awaiting completion of Pacific 2000 crane maintenance at Berth 3 due to Lihir Chief (Swire - Qube) being at Berth 2.
2	1700/1	LINX	BBC CARIBBEAN	7	DAY	2	32HRS	B	YES	YES	NIL	Awaiting departure of Lihir Chief (Swire - Qube)
3	2200/1	QP	FWN RANGER	R001	MIDNIGHT	3	40HRS	B	YES	YES	NIL	Awaiting departure of Sungkiang (Swire - Qube). Completed operations 0720hrs, C002 remained boomed down and moved across to Filia Ariea for function testing
4	1200/2	QP	BOSPORUS HIGHWA	118	MIDNIGHT	1	NIL	A, C, D & M	YES	YES	NIL	
5	1500/3	QP	TANNHAUSER	EE114	MIDNIGHT	1	NIL	A & C	YES	YES	NIL	
6	0800/4	LINX	FILIA ARIEA	82B	DAY	2	NIL	B	YES	YES	NIL	Berthed on arrival however had to wait for FWN Ranger to complete operations with Deer Park - this was schedule for 0700hrs and completed at 0720hrs. Workshop were on standby to function test crane.
7	1600/4	QP	GREBE ARROW	0321	DAY	3	8HRS	NS, J & H	YES	YES	NIL	Awaiting departure of FWN Ranger (Orica - Qube). Crane#1 doesn't work. C003 will be required.
8	1530/5	QP	EUROPEAN HIGHWA	209	DAY	1	NIL	A & D	YES	YES	NIL	
9	1700/6	LINX	DREAM ANGEL	21	MIDNIGHT	1	NIL	A & C	YES	YES	NIL	
10	0200/8	QP	FIDELIO	EF114/AF133	DAY	1	NIL	C	YES	YES	NIL	
11	1400/8	QP	HOUTMANGRACHT	2108	DAY	3	8HRS	E & W	YES	YES	NIL	Awaiting departure of Grebe Arrow (G2Ocean - Qube)
12	2100/8	QP	SHANSI	2111S/2111N	MIDNIGHT	2	NIL	B	YES	YES	NIL	
13	0600/9	QP	CATTLEYA ACE	68	DAY	1	NIL	A, C & M	YES	YES	NIL	
14	0100/10	LINX	HOEGH OSAKA	87	DAY	1	NIL	A, C, D & M	YES	YES	NIL	
15	1800/10	QP	TRIUMPH ACE	161	DAY	1	NIL	A, C & M	YES	YES	NIL	Qube did not allocate labour for midnight shift and instead did a 10hrs dayshift
16	0100/11	LINX	HOEGH ASIA	156	MIDNIGHT	1	16HRS	A & C	YES	YES	NIL	Awaiting departure of Triumph Ace (MOL - Qube)
17	0300/12	QP	GLOVIS CHORUS	76	DAY	1	NIL	A, C & D	YES	YES	NIL	
18	1400/12	QP	SOFRANA SURVILLE	273N	EVE	2	NIL	B	YES	YES	NIL	
19	0200/13	QP	MORNING CLARA	2164	DAY	1	NIL	A, C & D	YES	YES	NIL	
20	0400/13	LINX	HERCULES LEADER	79	EVE	2	NIL	A & C	YES	YES	NIL	
21	0001/14	QP	BF CALOOSA	21BNE0066	DAY	3	24HRS	F	YES	YES	NIL	Awaiting departure of Houtmangracht (IOS - Qube). Stevedore appointed 1200/11th
22	0200/14	LINX	TAURUS LEADER	48	DAY	2	NIL	E & M	YES	YES	NIL	
23	0700/14	QP	OPAL ACE	83	EVE	1	NIL	D & M	YES	YES	NIL	
24	1000/16	LINX	TRANS FUTURE 7	131	EVE	1	NIL	A & C	YES	YES	NIL	
25	1400/16	QP	TYSLA	EE115	DAY	1	NIL	A & C	YES	YES	NIL	
26	0200/17	QP	TURANDOT	2115	MIDNIGHT	1	16HRS	C & M	YES	YES	NIL	Awaiting departure of Tysla (WWL - Qube)
27	0800/17	QP	CORAL CHIEF	2121S/2125N	EVE	2	NIL	B	YES	YES	NIL	
28	1700/17	QP	EMERALD ACE	72	MIDNIGHT	1	32HRS	A & C	YES	YES	NIL	Awaiting departure of Turandot (Armacup - Qube)
29	0800/18	QP	THEMIS	EF115	DAY	1	16HRS	A & C	YES	YES	NIL	Awaiting departure of Emerald Ace (MOL - Qube)
30	0900/18	LINX	FILIA ARIEA	83B	DAY	2	24HRS	A, C & D	YES	YES	NIL	Awaiting departure of Coral Chief (Swire - Qube). Vessel was delayed working by 40hrs upon arrival at PS due to vessel being required to commence work in daylight for long & heavy ship loaders to be loaded.
31	1900/18	QP	GENIUS HIGHWAY	51	MIDNIGHT	1	16HRS	A	YES	YES	NIL	Awaiting departure of Themis (WWL - Qube)
32	1930/18	QP	SOUTHERN HIGHWA	101	DAY	GB	24HRS	C	YES	YES	NIL	Awaiting departure of Themis (WWL - Qube) & Genius Hwy (K-Line - Qube) from Berth 1. Vessel was then planned to go to Berth 4 however on PM/19th, vessel at Berth 4 was detained by AMSA and unable to leave berth. Southern Hwy berth had to be changed to Grain Berth (which was available) and laydown amended for Genius Hwy and Southern Hwy.
33	1100/20	LINX	GLOVIS CENTURY	20	EVE	1	NIL	A & C	YES	YES	NIL	Vessel was delayed berthing by 45mins due to late finish and departure of Genius Hwy (Genius Hwy was meant to complete 1200hrs but did not finish)
34	0200/22	LINX	CEPHEUS LEADER	13	DAY	1	NIL	A, C & D	YES	YES	NIL	
35	0400/22	LINX	JANNES	1307012	DAY	3	NIL	UHOOK	YES	YES	NIL	
36	1800/22	QP	TONGALA	EE116	DAY	1	NIL	M	YES	YES	NIL	Qube & WWL chose to commence Mon dayshift as vessel had to complete in PKL on Fri/weekend.
37	1500/24	QP	WEAVER ARROW	0421	MIDNIGHT	3	NIL	NS & H	YES	YES	NIL	GAS found in Hold 5 - all cargo from hatch subject to fumo on wharf.
38	0200/25	QP	TITANIA	EF116	DAY	1	NIL	A & C	YES	YES	NIL	
39	0800/25	QP	MORNING CRYSTAL	2165	DAY	1	16HRS	A	YES	YES	NIL	Awaiting departure of Titania (WWL - Qube). Qube did not have labour to work on midnight shift & delayed working vessel until dayshift Thur. 10hrs labour allocated & had to take labour ex Weaver Arrow to complete (2hr extension). Hoegh Trader had labour booked following this vessel.
40	1200/26	LINX	HOEGH TRADER	157	MIDNIGHT	1	16HRS	A & C	YES	YES	NIL	Awaiting departure of Morning Crystal (Armacup - Qube). Vessel slowed 10hrs due to berth congestion
41	0800/27	LINX	UNISPACE	2106	EVE	2	NIL	B	YES	YES	NIL	
42	0330/28	LINX	BRONZE LADY	2106	DAY	2	NIL	B	YES	YES	NIL	
43	0600/28	LINX	SUMMIT SW	003	DAY	3	NIL	OS	YES	YES	NIL	
44	0430/28	QP	MERMAID ACE	91	DAY	1	NIL	A & D	YES	YES	NIL	
45	2200/28	QP	WALRUS ACE	23	DAY	1	NIL	A & C	YES	YES	NIL	
46	1500/29	QP	BELNOR	75	DAY	3	NIL	E	YES	YES	NIL	Hatch 4 - collapsed stow of buildings (appears heavier buildings sitting on top of lighter buildings - concrete wall modular buildings) & rats sighted in Hatch 4 - DAWE investigating with Rentokil baits.
47	0700/30	QP	PASSAMA	2116	EVE	1	NIL	C	YES	YES	NIL	
48	0400/31	LINX	TRANS FUTURE 5	135	DAY	1	NIL	A & C	YES	YES	NIL	
49	0630/31	QP	SOFRANA TOURVILL	251N	EVE	2	NIL	B	YES	YES	NIL	

**Legend - Berth # and Laydown**

- Primary
- Secondary
- Tertiary

SUMMARY	LINX	QUBE	COMMENT
<b>TOTAL VESSELS FOR MONTH</b>	<b>17</b>	<b>31</b>	
<b>GREEN BERTH (Primary)</b>	<b>17</b>	<b>31</b>	
<b>ORANGE BERTH (Secondary)</b>	<b>0</b>	<b>1</b>	
<b>RED BERTH (Tertiary)</b>	<b>0</b>	<b>0</b>	
<b>GREEN LAYDOWN (Primary)</b>	<b>13</b>	<b>22</b>	
<b>ORANGE LAYDOWN (Secondary)</b>	<b>3</b>	<b>10</b>	
<b>RED LAYDOWN (Tertiary)</b>	<b>1</b>	<b>0</b>	
<b>NUMBER OF BERTHING DELAYS</b>	<b>4</b>	<b>11</b>	
<b>NUMBER OF MACHINERY ISSUES/REQUESTS NOT MET</b>	<b>0</b>	<b>0</b>	

SEPTEMBER

KPI 6 - Fisherman Islands September

NUMBER	DATE	STEVE-DORE	VESSEL	VOYAGE	STARTING SHIFT	BERTH #	BERTH DELAY	LAYDOWN	MACHINERY REQUEST RECEIVED	MACHINERY REQUEST FILLED	MACHINERY ISSUES	NOTES
1	0100/1	LINX	BBC CARIBBEAN	8	DAY	2	NIL	B	YES	YES	NIL	
2	1530/1	QP	TRANSFORMER OL	109	DAY	2	104HRS	F	YES	YES	NIL	Awaiting departure of Shantung (Swire - Qube) from Berth 2, after waiting for Belnor (Qube) to depart from Berth 3 however delayed ETD of Belnor resulted in Transformer OL berthing at Berth 2. Original ETA 3rd Sept; Berthed on 6/9 after sitting at anchor for 5 days and ships gear was found not workable (all cranes went into freefall). Vessel was requested to leave berth until shore crane is available (approx 10th). Qube did not have any Gottwald drivers, Liebherr crane was on Belnor and Deer Park on Lihir Chief.
3	0100/2	QP	SHANTUNG	2112S/2112N	MIDNIGHT	2	16HRS	B	YES	YES	NIL	Awaiting departure of BBC Caribbean (Agility - Linx). Original ETA 29th
4	1000/2	LINX	FILIA ARIEA	84	EVE	1	NIL	B	YES	YES	NIL	
5	1600/3	LINX	HOEGH KOBE	66	DAY	1	NIL	A & C	YES	YES	NIL	Grain Berth not available - vessel at berth with contaminated cargo and another vessel waiting at anchor.
6	1300/4	LINX	HOEGH TRIGGER	34	MIDNIGHT	1	NIL	A & C	YES	YES	NIL	
7	2230/4	QP	VICTORIOUS ACE	54	EVE	1	32HRS	C & D	YES	YES	NIL	Awaiting departure of Hoegh Trigger (Hoegh - Linx)
8	0800/5	QP	MORNING PEACE	EE117	DAY	1	16HRS	A & C	YES	YES	NIL	Awaiting departure of Victorious Ace (MOL - Qube)
9	2100/5	QP	LIHIR CHIEF	Z2123S/Z2127N	MIDNIGHT	2	24HRS	B	YES	YES	NIL	Awaiting departure of Morning Peace (WWL - Qube) at Berth 1. Late berth change from F11 to F12 as Transformer OL was removed from berth, so Transformer OL warped to Berth 1 to allow Lihir Chief to berth at Berth 2.
10	0200/7	QP	DON JUAN	2166	DAY	1	NIL	A & C	YES	YES	NIL	DAWE attended upon arrival and would not let ramp down until inspected as some bugs had been reported. Ramp was lowered 4hrs after labour start time.
11	0700/7	LINX	SAGITTARIUS LEAD	36	DAY	1	16HRS	A & C	YES	YES	NIL	Awaiting departure of Don Juan (Armacup - Qube)
12	0700/7	LINX	A.M.S. GLADSTONE (SEA FORCE)		DAY	2	48HRS	B	YES	YES	NIL	Awaiting departure of European Hwy (K-Line - Qube)
13	1300/8	QP	EUROPEAN HIGHWAY	210	EVE	2	NIL	D	YES	YES	NIL	
14	1600/9	QP	BLUE RIDGE HIGHWAY	106	MIDNIGHT	1	NIL	A & C	YES	YES	NIL	
15	0800/11	QP	IGUAZU HIGHWAY	33	EVE	1	NIL	A & C	YES	YES	NIL	
16	1600/11	LINX	DAEDALUS LEADER	94	DAY	1	8HRS	C	YES	YES	NIL	Awaiting departure of Iguazu Hwy (K-Line - Qube)
17	1215/11	LINX	DEMETER LEADER	15	DAY	1	NIL	D & M	YES	YES	NIL	
18	12-Sep	QP	TRANSFORMER OL	109	DAY	3	144HRS	F	YES	YES	NIL	Awaiting departure of Belnor (Qube). Original ETA 3rd Sept; Berthed on 6/9 after sitting at anchor for 5 days and ships gear was found not workable (all cranes went into freefall). Vessel was requested to leave berth until shore crane is available (approx 10th). Qube did not have any Gottwald drivers, Liebherr crane was on Belnor and Deer Park on Lihir Chief.
19	0400/13	LINX	HOEGH BERLIN	110	DAY	1	24HRS	A & C	YES	YES	NIL	Awaiting departure of Demeter Leader (NYK - Linx)
20	0900/13	QP	ELEGANT ACE	65	EVE	2	NIL	A & C	YES	YES	NIL	
21	1630/13	LINX	TRANS FUTURE 6	132	MIDNIGHT	1	24HRS	A	YES	YES	NIL	Awaiting departure of Hoegh Berlin (Hoegh - Linx)
22	1830/13	QP	LIHIR CHIEF	2123S/2127N	DAY	2	8HRS	B	YES	YES	NIL	Awaiting departure of Elegant Ace (MOL - Qube)
23	0900/14	LINX	SUPER VALENTINA	202102	DAY	2	16HRS	OS	YES	YES	NIL	Awaiting departure of Lihir Chief (Swire - Qube)
24	0200/15	QP	TAMERLANE	EF117	EVE	1	8HRS	A & C	YES	YES	NIL	Awaiting departure of Trans Future 6 (Toyofuji - Linx). Qube allocated 7hrs labour instead of 8hrs and then only had 9 x people to work the balance of the work after 7hrs (24 people allocated for 7hrs only)
25	1400/15	QP	SOFRANA TOURVILL	251S	MIDNIGHT	2	24HRS	B	YES	YES	NIL	Awaiting departure of Super Valentina (Bluescope - Linx)
26	1800/16	LINX	FILIA ARIEA	85	DAY	2	32HRS	B	YES	YES	NIL	Awaiting departure of Sofrana Tourville (Sofrana - Qube)
27	0200/17	LINX	VENUS LEADER	33	DAY	1	NIL	A	YES	YES	NIL	
28	1600/17	QP	GLOVIS CONDOR	7	DAY	1	8HRS	A & D	YES	YES	NIL	Awaiting departure of Venus Leader (NYK - Linx)
29	0500/18	QP	SUNSHINE ACE	90	MIDNIGHT	1	8HRS	C & D	YES	YES	NIL	Awaiting departure of Glovis Condor (MOL - Qube)
30	0800/18	QP	MORNING CELESTA	EE118	DAY	1	16HRS	A & C	YES	YES	NIL	Awaiting departure of Sunshine Ace (MOL - Qube). Departure pushed back however due to large container ship movement unable to get departure until later (delayed Marvelous Ace by 1hr)
31	1000/18	QP	THORCO LANNER	2004260010	MIDNIGHT	2	32HRS	E	YES	YES	NIL	Awaiting departure of Filia Ariea (OkTedi - Linx)
32	0630/19	QP	MARVELOUS ACE	115	MIDNIGHT	1	16HRS	M	YES	YES	NIL	Awaiting departure of Morning Celesta (WWL - Qube)
33	0600/20	QP	KING ISLAND	2106S	DAY	3	32HRS	NS & F	YES	YES	NIL	Awaiting departure of Thorco Lanner (Infrabuild - Qube)
34	0900/20	QP	MORNING CROWN	EE119	EVE	1	NIL	A & C	YES	YES	NIL	
35	2230/21	QP	PROMINENT ACE	141	DAY	1	NIL	A	YES	YES	NIL	
36	2100/22	QP	AAL SHANGHAI	21003	DAY	3	48HRS	OS, J, H, E	YES	YES	NIL	Awaiting warping of King Island (Swire - Qube)
37	1300/23	QP	TOKYO CAR	2117	MIDNIGHT	1	NIL	A	YES	YES	NIL	Original BSD was for SPI. It was appealed and overturned.
38	0400/24	QP	GENIUS HIGHWAY	52	MIDNIGHT	1	8HRS	A	YES	YES	NIL	Awaiting departure of Tokyo Car (Armacup - Qube)
39	0600/25	QP	THERMOPYLAE	EF118	DAY	1	24HRS	C	YES	YES	NIL	Awaiting departure of Genius Hwy (K-Line - Qube)
40	1600/25	QP	HUDSONGRACHT	2109	DAY	2	32HRS	UHOOK	YES	YES	NIL	Awaiting departure of King Island (Swire - Qube)
41	1800/25	QP	CORAL CHIEF	2125S/2129N	DAY	2	56HRS	B	YES	YES	NIL	Awaiting departure of Hudsongracht (Asiaworld - Qube)
42	1900/25	QP	HOEGH CHIBA	58	DAY	1	32HRS	A & C	YES	YES	NIL	Awaiting departure of Thermopylae (WWL - Qube)
43	0100/26	LINX	HYPERION LEADER	104	EVE	1	56HRS	A	YES	YES	NIL	Awaiting departure of Hoegh Chiba (Hoegh - Linx)
44	1400/26	QP	GRAND VICTORY	5	DAY	1	56HRS	A & C	YES	YES	NIL	Awaiting departure of Hyperion Leader (NYK - Linx)
45	0030/28	LINX	TRANS FUTURE 7	132	MIDNIGHT	1	40HRS	A & C	YES	YES	NIL	Awaiting departure of Grand Victory (K-Line - Qube)
46	1030/28	QP	BOHEME	EE122	DAY	1	32HRS	A & C	YES	YES	NIL	Awaiting departure of Trans Future 7 (Toyofuji - Linx)

Legend - Berth # and Laydown

- Primary
- Secondary
- Tertiary

SUMMARY	LINX	QUBE	COMMENT
<b>TOTAL VESSELS FOR MONTH</b>	15	31	
<b>GREEN BERTH (Primary)</b>	15	31	
<b>ORANGE BERTH (Secondary)</b>	0	0	
<b>RED BERTH (Tertiary)</b>	0	0	
<b>GREEN LAYDOWN (Primary)</b>	14	25	
<b>ORANGE LAYDOWN (Secondary)</b>	1	6	
<b>RED LAYDOWN (Tertiary)</b>	0	0	
<b>NUMBER OF BERTHING DELAYS</b>	9	23	
<b>NUMBER OF MACHINERY ISSUES/REQUESTS NOT MET</b>	0	0	



OCTOBER

KPI 6 - Fisherman Islands October

NUMBER	DATE	STEVE-DORE	VESSEL	VOYAGE	STARTING SHIFT	BERTH #	BERTH DELAY	LAYDOWN	MACHINERY REQUEST RECEIVED	MACHINERY REQUEST FILLED	MACHINERY ISSUES	NOTES
1	0200/29	QP	CARMEN	EF119/AF141	MIDNIGHT	1	40HRS	A & C	YES	YES		Awaiting departure of Boheme (WWL - Qube)
2	1600/29	LINX	BBC CARIBBEAN	9	MIDNIGHT	2	NIL	B	YES	YES		
3	2100/29	QP	EMU ARROW	0521	DAY	3	32HRS	OS & F	YES	YES		Awaiting departure of AAL Shanghai (AAL - Qube)
4	0400/30	LINX	HERCULES LEADER	80	EVE	1	40HRS	A & C	YES	YES		Awaiting departure of Carmen (WWL - Qube). Crew deemed close contact and required to test upon arrival at anchorage.
5	0600/30	QP	ORCA ACE	27	EVE	2	48HRS	A, C & D	YES	YES		Awaiting departure of BBC Caribbean (Agility - Linx)
6	1320/30*	LINX	IRIS LEADER	43	DAY	1	24HRS	D	YES	YES		Awaiting departure of Hercules Leader (NYK - Linx). Arrived PS 1200/29PS and had to undergo testing at anchorage. Clearance received 1320/30th
7	0815/1	LINX	FILIA ARIEA	86	MIDNIGHT	2	72HRS	B	YES	YES		Awaiting departure of Orca Ace (MOL - Qube)
8	1000/2	QP	PLOVER ARROW	0521	MIDNIGHT	3	32HRS	NS, E & G	YES	YES		Awaiting departure of Emu Arrow (G2Ocean - Qube)
9	1600/2	QP	DIJKSGRACHT	2106	DAY	2	56HRS	F	YES	YES		Awaiting departure of Filia Ariea (OkTedi - Linx). Idle from 0700/7th to 1330/7th (labour & yard space). Vessel had labour until 0400hrs and sailed early at 0100hrs.
10	1000/3	LINX	CEPHEUS LEADER	14	DAY	1	40HRS	D & M	YES	YES		Awaiting departure of Iris Leader (NYK - Linx)
11	2342/4	QP	HOEGH TROOPER	191	DAY	1	24HRS	A & C	YES	YES		Awaiting departure of Cepheus Leader (NYK - Linx)
12	0058/5	QP	BRILLIANT ACE	86	DAY	1	48HRS	A	YES	YES		Awaiting departure of Hoegh Trooper (Hoegh - Seaway). Vessel was originally scheduled to depart at 1530hrs, labour was put over to Dijkgracht. Departure delayed 3hrs.
13	0818/5	QP	CORAL CHIEF	2129S/2129N	DAY	2	64HRS	B	YES	YES		Awaiting departure of Dijkgracht (Spliethoff - Qube). Due to Vanuatu Chief being delayed through NZ due to COVID-19 (need to wait 14 days off NZ). Coral Chief is returning from NOU to collect Vanuatu Chief containers.
14	1600/7	QP	TURANDOT	2118	DAY	1	NIL	A & C	YES	YES		Vessel ETA 2300/6th; vessel slowed to be able to Pilot on arrival.
15	1200/8	QP	MORNING CRYSTAL	2167	EVE	1	8HRS	C	YES	YES		Awaiting departure of Turandot (Armacup - Qube). Vessel had green light to discharge on Mon and then on Fri DAWE instructed that they wanted to attend to inspect dead bugs.
16	1300/9	QP	WALRUS ACE	24	EVE	2	32HRS	D & M	YES	YES		Awaiting departure of Coral Chief (Swire - Qube)
17	1500/10	LINX	DORADO LEADER	107	EVE	1	16HRS	A & D	YES	YES		Awaiting departure of Morning Crystal (Armacup - Qube). Live bug found in TSV, awaiting ento, have to fog in TSV. ETA to Bne delayed 15hrs. In BNE ETD was pushed back to half hour but could only get 1.5hrs. So it was brought back 20mins later to original ETD 0800hrs. Unfortunately Morning Prosperity berthing had already been pushed back and couldnt get original time again
18	0800/10	QP	AAL NEWCASTLE	21006	DAY	3	48HRS	S, NS, J, H, E &	YES	YES		Awaiting departure of Walrus Ace (MOL - Qube) from Berth 2. 16 gang shifts
19	0200/12	QP	MORNING PROSPER	EE121	DAY	1	NIL	A & C	YES	YES		Delayed due to strike in FRE; Berthing time pushed back from 0930 to 1100hrs as Dorado leader ETD was changed to 0930 and then brought back to 0800hrs (all within 20mins but M/Prosperity couldn't get time again). Labour booked from 11am, ramp down at 12pm.
20	0500/12	LINX	TRANS FUTURE 5	136	MIDNIGHT	1	12HRS	A & C	YES	YES		Awaiting departure of Morning Prosperity (WWL - Qube)
21	0200/13	QP	TAMESIS	EZ102/AF140	EVE	1	6HRS	A & C	YES	YES		Awaiting departure of Trans Future 5 (Toyofuji - Linx)
22	1900/13	QP	BLUE RIDGE HIGHW	107	DAY	1	NIL	C	YES	YES		
23	0700/14	QP	PARSIFAL	EF120/AF144	DAY	1	16HRS	A & C	YES	YES		Awaiting departure of Blue Ridge Hwy (K-Line - Qube)
24	1800/15	QP	HOEGH TRACER	32	DAY	1	8HRS	A & C	YES	YES		Awaiting departure of Parsifal (WWL - Qube)
25	1800/15	QP	SOFRANA SURVILLE	274S	DAY	2	NIL	B	YES	YES		Ship wants to bunker on arrival (needs to be done when Qube are not working)
26	0700/16	QP	DONG-A METIS	7	DAY	1	16HRS	A & C	YES	YES		Awaiting departure of Hoegh Tracer (Hoegh - Seaway)
27	1240/16	QP	PASSAMA	2168	DAY	1	NIL	D	YES	YES		ETA BNE 0600/15th. Going to QBT to fog on arrival and due to get clearance on Sat so that they can book labour on Sunday for Monday. Clearance received 1240/16th
28	0400/18	QP	ETERNAL ACE	84	MIDNIGHT	1	12HRS	C	YES	YES		Awaiting departure of Passama (Armacup - Qube)
29	1300/18	QP	SAMOA CHIEF	2114S/2114N	EVE	2	16HRS	B	YES	YES		Awaiting departure of Sofrana Surville (Sofrana - Qube)
30	1630/18	QP	ONYX ACE	82	MIDNIGHT	3	NIL	M	YES	YES		
31	1300/19	LINX	ULTRA SILVA	2014520004	MIDNIGHT	3	NIL	NS	YES	YES		
32	1800/19	LINX	ZENITH LEADER	105	MIDNIGHT	1	NIL	A & C	YES	YES		
33	0200/21	QP	FREEDOM ACE	144	DAY	1	NIL	C	YES	YES		
34	1100/22	QP	KOKOPO CHIEF	2107S	MIDNIGHT	2	NIL	OS & F	YES	YES		
35	1100/22	QP	KOKOPO CHIEF	035S/036N	MIDNIGHT	2	NIL	B	YES	YES		
36	0200/23	QP	SALOME	EF121/AF146	DAY	1	NIL	C	YES	YES		
37	0830/25	LINX	TRANS FUTURE 6	133	EVE	1	NIL	A	YES	YES		
38	0600/26	QP	GRAVITY HIGHWAY	54	DAY	1	NIL	A & D	YES	YES		
39	0200/26	QP	GENIUS HIGHWAY	53	DAY	2	NIL	A, C & D	YES	YES		
40	2200/26	QP	LIHIR CHIEF	2127S/2131N	DAY	2	NIL	B	YES	YES		Pacific 2000 (contactor fault) from 1300-1800hrs on 27th. Qube switched to Liebherr during this time.
41	0100/27	LINX	MONOCEROS LEADER	21	EVE	1	8HRS	A & D	YES	YES		Awaiting departure of Gravity Hwy (K-Line - Qube). ETA 0100/25 however slowed to 1300/25 as waiting for export cargo (incl Singapore military cargo). Cut-off now 1400/26th. After SPI vessel required fogging, AAT had lay up berth. Vessel remained at Berth 1 and arranged fogging straight away. Vessel failed reinspection

Legend - Berth # and Laydown

Primary
Secondary
Tertiary

SUMMARY	LINX	QUBE	COMMENT
TOTAL VESSELS FOR MONTH	11	30	
GREEN BERTH (Primary)	11	30	
ORANGE BERTH (Secondary)	0	0	
RED BERTH (Tertiary)	0	0	
GREEN LAYDOWN (Primary)	7	22	
ORANGE LAYDOWN (Secondary)	4	8	
RED LAYDOWN (Tertiary)	0	0	
NUMBER OF BERTHING DELAYS	7	17	
NUMBER OF MACHINERY ISSUES/REQUESTS NOT MET	0	1	Qube experienced fault with Pacific 2000 crane resulting in 5hr downtime.



NOVEMBER

KPI 6 - Fisherman Islands November

NUMBER	DATE	STEVE-DORE	VESSEL	VOYAGE	STARTING SHIFT	BERTH #	BERTH DELAY	LAYDOWN	MACHINERY REQUEST RECEIVED	MACHINERY REQUEST FILLED	MACHINERY ISSUES	NOTES
1	2130/29	QP	PENGUIN ARROW	0521	MIDNIGHT	3	NIL	NS, J, H, G, F	YES	YES	Pacific 2000 would not boom down upon commencement of shift. Linx used Liebherr crane. Then when Linx went to use the Pacific 2000 at 1100/1st the long travel wouldn't work (cable reeler driver not working). Linx had to use Liebherr to complete the exchange. 4hr extension required to complete.	
2	1900/30	LINX	FILIA ARIEA	87	MIDNIGHT	2	NIL	B	YES	YES		Vessel was due to arrive 1100/31st but made up time to 1900/30th - vessel will lay up and work as arranged Sunday night
3	0100/1	QP	TIANJIN HIGHWAY	144	DAY	1	NIL	A & C	YES	YES		
4	0200/2	QP	ORCHID ACE	118	DAY	1	NIL	A	YES	YES		
5	0330/2	LINX	BBC CARIBBEAN	10	DAY	2	NIL	B	YES	YES	Planned to use Pacific 2000 but cable reeler drive was not working so had to use Liebherr crane for entire operation. Deer Park was landlocked at Berth 1 by pacific 2000 whgihc was unable to move.	
6	0030/4	QP	TS ECHO	2108S	DAY	3	NIL	OS & F	YES	YES		
7	0600/4	QP	SOFRANA SURVILLE	275S	EVE	2	NIL	B	YES	YES	Preference was for Pacific 2000 but had to use Liebherr crane due to cable reeler drive issue on Pacific 2000 (Qube were advised on 2/11/21)	Ship wants to bunker on arrival (needs to be done when Qube are not working)
8	1000/4	LINX	GRAND CHOICE	15	EVE	1	NIL	A & C	YES	YES	Preference was for Pacific 2000 but had to use Liebherr crane due to cable reeler drive issue on Pacific 2000 (Qube were advised on 2/11/21)	
9	0630/5	QP	VICTORIOUS ACE	55	EVE	1	NIL	A & C	YES	YES		
10	0100/6	QP	TREADOR	EE123	DAY	1	NIL	C	YES	YES		
11	0800/6	QP	SOFRANA TOURVILLE	253N	EVE	2	NIL	B	YES	YES		
12	2000/6	QP	VICTORIA HIGHWAY	31	DAY	1	NIL	A, C & D	YES	YES		
13	1400/9	QP	PROMINENT ACE	142	MIDNIGHT	1	NIL	A & D	YES	YES		
14	2000/9	QP	MORNING CLARA	2169	DAY	2	NIL	C	YES	YES		
15	0130/10	LINX	POSITIVE LEADER	88	DAY	1	NIL	A, C & D	YES	YES		
16	0430/10	LINX	TRANS FUTURE 7	133	MIDNIGHT	3	9HRS	E	YES	YES		Awaiting departure of Morning Clara (Armacup - Qube) from Berth 3 so stern ramp could be lowered. Vessel chose to berth with ramp up rather than wait at anchor to improve ETD from Brisbane. Vessel faced delayed in PKL following.
17	0800/11	QP	MERIDIAN ACE	181	EVE	1	NIL	A	YES	YES		
18	0100/12	LINX	HOEGH ST PETERS	71	DAY	2	NIL	A & C	YES	YES		
19	1100/12	QP	DON JUAN	2119	EVE	1	NIL	A, C & M	YES	YES		vessel sailed 3hrs late
20	2330/12	QP	COURAGEOUS ACE	145	DAY	3	NIL	E	YES	YES		vessel sailed 4hrs late
21	1900/13	QP	KITE ARROW	0621	MIDNIGHT	3	NIL	NS, J & H	YES	YES		
22	0200/14	QP	THALATTA	EF122/AE135	EVE	1	NIL	A & C	YES	YES		
23	0400/14	QP	ANNE METTE BULKER	2109S	DAY	2	NIL	OS & F	YES	YES		
24	0800/15	QP	PORT VILA CHIEF	2115S/2115N	DAY	2	24HRS	B	YES	YES		Awaiting departure of Anne Mette Bulker (Swire - Qube)
25	0809/15	LINX	FILIA ARIEA	88	DAY	1	48HRS	B	YES	YES		Awaiting departure of Amber Arrow (K-Line - Qube) at Berth 1 due to congestion at berth 2. WiFi device requested. Crew were able to connect to wifi but not to internet. Ship finished a shift earlier (completed AM/18th)
26	0030/16	QP	AMBER ARROW	130	EVE	1	NIL	-	YES	YES		vessel slowed 12hrs to pilot on arrival on Monday AM. Original ETA 1330/15PS. SPI at 0600/16th and failed (2 x live lady bugs found). Vessel ordered to fog. K-Line had fumigators on standby. Vessel remained alongside until 2230/16th to do fogging and then shifted to QBT for re-inspection on AM/17th. Vessel then had to shift to anchorage to await berth at AAT.
27	1000/15	QP	AAL MELBOURNE	2100S	EVE	3	48HRS	OS, F, G, H & J	YES	YES		Awaiting departure of Kite Arrow (G2Ocean - Qube)
28	1800/17	QP	CORAL CHIEF	2129S/2133N	DAY	2	32HRS	B	YES	YES		Awaiting departure of Port Vila Chief (Swire - Qube)
29	1415/18**	LINX	GRAND COSMO	107	DAY	1	NIL	A & D	YES	YES		Vessel ETA 0100/17PS; Vessel re-submitted DAWE report prior to arrival as NYK thought Captain had incorrectly responded to a question. However DAWE did not overturn decision of BSD for fogging on arrival. Vessel fogged at anchorage on 17th and then went to QBT for inspection.
30	1300/18	QP	AAL PARIS	21003	MIDNIGHT	3	120HRS	OS & H	YES	YES		Awaiting departure of AAL Melbourne (AAL - Qube)
31	0500/19	LINX	A.M.S. GLADSTONE	003	DAY	2	NIL	B	YES	YES		
32	0600/19	LINX	RHEA LEADER	103	DAY	1	20HRS	A, C & D	YES	YES		Awaiting departure of Grand Cosmo (NYK - Linx)
33	1520/19**	QP	AMBER ARROW	130	MIDNIGHT	1	NIL	A, C, D & M	YES	YES		vessel slowed 12hrs to pilot on arrival on Monday AM. Original ETA 1330/15PS. SPI at 0600/16th and failed (2 x live lady bugs found). Vessel ordered to fog. K-Line had fumigators on standby. Vessel remained alongside until 2230/16th to do fogging and then shifted to QBT for re-inspection on AM/17th. Vessel then had to shift to anchorage to await berth at AAT. Vessel failed re-inspection. 2nd fogging arranged for at anchorage on 18/11 and then shift to QBT on 19th for re-inspection. Clearance received at 1520hrs/19th (Friday) and therefore had to wait until Sunday to book labour for Monday. There were 3 x vessels available to work over the weekend who had all booked labour at 11am Friday, so Amber Arrow had to wait at anchor before berthing at F11.
34	2200/19	QP	BLUE RIDGE HIGHWAY	108	DAY	1	24HRS	C & D	YES	YES		Awaiting departure of Rhea Leader (NYK - Linx)
35	0500/20	LINX	HOEGH DETROIT	102	MIDNIGHT	1	40HRS	C, D & M	YES	YES		Awaiting departure of Blue Ridge Hwy (K-Line - Qube)
36	1600/20	QP	ORCA ACE	28	EVE	1	40HRS	A	YES	YES		Awaiting departure of Amber Arrow (K-Line - Qube)
37	1600/21	QP	CORAL CHIEF	2129S/2133N	DAY	2	NIL	B	YES	YES		Vessel returned to complete reloading DLRs and other containers after leak in tank while bunkering. More work required whilst alongside and had to remove from berth due to inbound vessel AMS Gladstone already having labour booked. Coral Chief removed to be cleaned and came back to finish loading (1 shift to go).
38	2100/22	QP	MARVELOUS ACE	116	EVE	2	8HRS	E	YES	YES		Awaiting departure of Coral Chief (Swire - Qube). Yard Congestion, vessel could not start until evening shift
39	0001/23	QP	FWN RANGER	R002	DAY	3	96HRS	B	YES	YES		Awaiting departure of AAL Paris (AAL - Qube)
40	0100/23	QP	THEBEN	EE124	EVE	1	32HRS	A & C	YES	YES		Awaiting departure of Orca Ace (MOL - Qube). Yard Congestion, vessel could not start until evening shift
41	1800/23	QP	GRACIOUS ACE	75	DAY	2	12HRS	C	YES	YES		Awaiting departure of Marvelous Ace (MOL - Qube)
42	1930/23	LINX	TRANS FUTURE 5	137	DAY	1	24HRS	A, C & D	YES	YES		Awaiting departure of Theben (WWL - Qube)
43	1800/24	QP	TS CHALLENGE	2108	DAY	2	12HRS	E & OTP	YES	YES		Awaiting departure of Gracious Ace (MOL - Qube)
44	0300/25	QP	SOFRANA SURVILLE	276N	MIDNIGHT	2	112HRS	B	YES	YES		Awaiting departure of TS Challenge (Infrabuild - Qube)
45	0700/25	LINX	ZENITH LEADER	106	MIDNIGHT	1	8HRS	A, C, D & M	YES	YES		Awaiting departure of Trans Future 5 (Toyofuji - Linx)
46	1000/27	QP	GRAND VENUS	7	EVE	1	8HRS	A, C, D & M	YES	YES		Awaiting departure of Zenith Leader (NYK - Linx)
47	2000/27	QP	GREBE ARROW	202105	MIDNIGHT	3	40HRS	OS, F & J	YES	YES		Awaiting departure of FWN Ranger (Orca - Qube)
48	1000/28	QP	GENIUS HIGHWAY	54	EVE	1	24HRS	A, C, D & M	YES	YES		Yard Congestion, vessel could not start until evening shift Mon.
49	0700/29	QP	GLOVIS COUGAR	8	EVE	1	28HRS	A & M	YES	YES		Awaiting departure of Genius Hwy (K-Line - Qube). Berth congestion & Yard congestion.

Legend - Berth # and Laydown

- Primary
- Secondary
- Tertiary

SUMMARY	LINX	QUBE	COMMENT
TOTAL VESSELS FOR MONTH	13	36	
GREEN BERTH (Primary)	13	36	
ORANGE BERTH (Secondary)	0	0	
RED BERTH (Tertiary)	0	0	
GREEN LAYDOWN (Primary)	7	26	
ORANGE LAYDOWN (Secondary)	6	10	
RED LAYDOWN (Tertiary)	0	0	
NUMBER OF BERTHING DELAYS	6	16	
NUMBER OF MACHINERY ISSUES/REQUESTS NOT MET	0	0	

DECEMBER

KPI 6 - Fisherman Islands December

NUMBER	DATE	STEVE-DORE	VESSEL	VOYAGE	STARTING SHIFT	BERTH #	BERTH DELAY	LAYDOWN	MACHINERY REQUEST RECEIVED	MACHINERY REQUEST FILLED	MACHINERY ISSUES	NOTES
1	2230/30	QP	SOFRANA TOURVILLE	253S	MIDNIGHT	2	24HRS	B	YES	YES	NIL	Awaiting departure of Sofrana Surville (Sofrana - Qube)
2	0745/1	QP	NIAGARA HIGHWAY	22	EVE	1	NIL	A, C & D	YES	YES	NIL	
3	1200/2	LINX	FILIA ARIEA	89	MIDNIGHT	2	32HRS	B	YES	YES	NIL	Awaiting departure of Sofrana Tourville (Sofrana - Qube)
4	1515/3	LINX	GAIA LEADER	74	DAY	1	NIL	A, C & D	YES	YES	NIL	Original ETA 4th, then ETA advanced to 1st then lost time to 0500/2ETA. Vessel had to fog on arrival in BNE. Booked to fog at GP Berth on 2nd re-inspection booked for 0600/3rd. Originally vessel was contemplating fogging at anchor as Tannhauser had booked GP Berth however when Tannhauser was not allowed to berth, Gaia Leader booked berth.
5	1200/4*	QP	TANHAUSER	EF123	DAY	1	NIL	D & M	YES	YES	NIL	Original ETA 25th then 27th. Vessel then delayed to 30th due to congestion in NZAKL. Vessel had to fog in AKL. Vessel ETA BNE 0200/30th. Vessel had to fog upon arrival in BNE. Vessel was under pilot to to GP Berth for lay up and treatment on 30th Nov when BSD was updated for vessel to remain 3 nautical miles from land. Vessel had to turn around and go to outer anchorage and submit a risk mitigation management plan to DAWE. Fogging at anchor was booked for 3rd Dec and re-inspection at GP Berth on 4th Dec.
6	1800/4	QP	VANUATU CHIEF	2116S/2116N	DAY	2	8HRS	B	YES	YES	Deer Park blown hoist motor on day shift 6/12.	Awaiting departure of Filia Ariea (OkTedi - Linx). Delayed departure. Deer Park blown hoist motor on day shift 6/12.
7	2300/4	QP	AAL SINGAPORE	2100S	MIDNIGHT	2	80HRS	OS, F, H & W	YES	YES	NIL	Awaiting departure of Merwedegracht (Spliethoff - Linx) at Berth 3. Vessel unable to fit PST at Berth 3 and work on arrival (bend in wharf). Too many restows required if SST Merwedegracht jumped queue due to LOA 142m. Vessel berthed at No.2 after Vanuatu Chief (Swire - Qube) and required to warp after the Merwedegracht departs
8	1200/5	LINX	MERWEDEGRACHT	2111	DAY	3	NIL	F	YES	YES	NIL	
9	0800/6	QP	TIANJIN HIGHWAY	145	MIDNIGHT	1	NIL	A, C & M	YES	YES	NIL	
10	0340/7	QP	PRECIOUS ACE	76	DAY	1	NIL	A, C & D	YES	YES	NIL	
11	1200/7	LINX	TRANS FUTURE 6	134	MIDNIGHT	1	24HRS	A, C, D & M	YES	YES	NIL	Awaiting departure of Precious Ace (MOL - Qube)
12	1900/7	LINX	TRANS LEADER	38	MIDNIGHT	1	48HRS	A, C & D	YES	YES	NIL	Awaiting departure of Trans Future 6 (Toyofuji - Linx)
13	2100/7	QP	GALAXY ACE	69	DAY	1	48HRS	C	YES	YES	NIL	Awaiting departure of Trans Leader (NYK - Linx)
14	0530/8	QP	LIHIR CHIEF	2131S/2201N	MIDNIGHT	2	48HRS	B	YES	YES	NIL	Awaiting warping of AAL Singapore (AAL - Qube). Delayed berthing due to the delayed departure of the Merwedegracht (poorly stowed cargo). AAL Singapore allocated berth No.2
15	2100/10	QP	ONYX ACE	83	DAY	1	NIL	C, D & M	YES	YES	NIL	
16	0940/10	LINX	CHIPOL GUANGAN	011	DAY	2	NIL	OS	YES	YES	NIL	
17	0945/10	QP	VECTIS OSPREY	2106	DAY	2	96HRS	B	YES	YES	NIL	Awaiting departure of Chipol Guangan (Asiaworld - Linx). ETA 8/12/21 HOWEVER CUT OFF IS 1400/10TH.
18	2300/10	LINX	POSITIVE LEADER	54	MIDNIGHT	1	16HRS	D & M	YES	YES	NIL	Awaiting departure of Onux Ace (MOL - Qube)
19	1500/11	LINX	BBC CARIBBEAN	11	MIDNIGHT	3	96HRS	B	YES	YES	NIL	Awaiting departure of Vectis Osprey (Orica - Qube) and then warped to berth 3 after AAL Singapore (AAL - Qube) departed which allowed PCC vessels to berth at F11 and F12
20	1800/11	LINX	HOEGH ASIA	158	DAY	1	32HRS	A, C & M	YES	YES	NIL	Awaiting departure of Positive Leader (NYK - Linx)
21	0100/12	QP	MORNING CLARA	2172	EVE	1	48HRS	A & D	YES	YES	NIL	Awaiting departure of Hoegh Asia (Hoegh - Linx)
22	0900/12	QP	DUGONG ACE	24	DAY	1	88HRS	A & C	YES	YES	NIL	Awaiting departure of Morning Clara (Armacup - Qube)
23	0200/13	QP	TONSBERG	EF125	EVE	1	136HRS	C, D & M	YES	YES	NIL	Awaiting departure of Apollon Hwy (K-Line - Qube) & vessel unable to fit with other vessels at F12
24	0200/15	QP	PASSAMA	2122	EVE	2	24HRS	D & M	YES	YES	NIL	Awaiting warping of BBC Caribbean (Agility - Linx) to berth ?
25	1200/15	QP	APOLLON HIGHWAY	58	EVE	1	40HRS	A, C & D	YES	YES	NIL	Awaiting departure of Dugong Ace (MOL - Qube) and yard space
26	0730/16	QP	MORNING LISA	EE127	DAY	3	40HRS	A & C	YES	YES	NIL	Awaiting departure of Passama (Armacup - Qube)
27	0100/17	LINX	GREEN COVE	73	DAY	1	80HRS	A, C & D	YES	YES	NIL	Awaiting departure of Grand Duke (NYK - Linx)
28	1530/17	LINX	GRAND DUKE	10	EVE	1	64HRS	A, C, D & M	YES	YES	NIL	Awaiting departure of Tonsberg (WWL - Qube)
29	1400/18	QP	LIHIR CHIEF	2131S/2201N	DAY	3	8HRS	B	YES	YES	NIL	Awaiting departure of Morning Lisa (WWL - Qube) from Berth 2
30	0600/20	LINX	FILIA ARIEA	90	MIDNIGHT	2	8HRS	B	YES	YES	NIL	Delayed start due to labour availability
31	2000/20	LINX	HOEGH TRAVELLER	30	DAY	2	24HRS	A	YES	YES	NIL	Awaiting departure of Filia Ariea (OkTedi - Linx).
32	2000/20	QP	AAL SHANGHAI	2100S	DAY	3	NIL	NS, J, H, F	YES	YES	NIL	
33	1600/21	LINX	TRANS FUTURE 7	134	EVE	1	16HRS	C, D & M	YES	YES	NIL	Awaiting departure of Green Cove (NYK - Linx) and yard space
34	2300/21	QP	SAMOA CHIEF	2117S/2117N	MIDNIGHT	2	16HRS	B	YES	YES	NIL	Awaiting departure of Hoegh Traveller (Hoegh - Linx)
35	0300/22	QP	BLUE RIDGE HIGHWAY	109	EVE	1	32HRS	A & C	YES	YES	NIL	Awaiting departure of Trans Future 7 (Toyofuji - Linx) & yard space
36	1445/22	QP	MERIDIAN ACE	182	DAY	1	80HRS	A, C & D	YES	YES	NIL	Awaiting departure of Blue Ridge Hwy (K-Line - Qube) & yard space. Vessel had to lay up over Christmas to commence work Boxing Day. Fogging in Guam (Saipan) prior to Australian call
37	2150/22	QP	WALRUS ACE	26	DAY	1	96HRS	A, D & M	YES	YES	NIL	Awaiting departure of Meridian Ace (MOL - Qube)
38	0250/23	QP	MORNING CRYSTAL	2172	EVE	1	120HRS	C & M	YES	YES	NIL	Awaiting departure of Walrus Ace (MOL - Qube)
39	0330/24	LINX	RHEA LEADER	104	EVE	2	128HRS	A, C, D, M & E	YES	YES	NIL	Awaiting yard space
40	0200/25	QP	TRAVIATA	EF126	DAY	1	96HRS	A, C & M	YES	YES	NIL	Awaiting departure of Morning Crystal (Armacup - Qube) which had been delayed due to berth and yard congestion
41	0800/26	QP	SOFRANA SURVILLE	276S	EVE	2	NIL	B	YES	YES	NIL	
42	0245/29	QP	WISTERIA ACE	111	DAY	2	48HRS	M	YES	YES	NIL	Awaiting departure of Rhea Leader (NYK - Linx)
43	1000/29	LINX	SARA LEADER	23	DAY	1	64HRS	A	YES	YES	NIL	Awaiting departure of Traviata (WWL - Qube)
44	1600/29	QP	TARAGO	EE125/AF152	DAY	2	56HRS	C, D, M & E	YES	YES	NIL	Awaiting departure of Wisteria Ace (MOL - Qube). Original ETA was 27/11/2021 however vessel in FRE and had to leave Australian waters. Vessel went to South Africa(?) to unload all cargo and be treated before returning to Australia.
45	0318/30	LINX	ZENITH LEADER	107	EVE	1	80HRS	A, C & D	YES	YES	NIL	Awaiting departure of Sara Leader (NYK - Linx)
46	1600/31	QP	WEAVER ARROW	0621	EVE	3	88HRS	OS & W	YES	YES	NIL	Awaiting departure of Tarago (WWL - Qube) and yard space

Legend - Berth # and Laydown

Primary
Secondary
Tertiary

SUMMARY	LINX	QUBE	COMMENT
TOTAL VESSELS FOR MONTH	17	29	
GREEN BERTH (Primary)	17	29	
ORANGE BERTH (Secondary)	0	0	
RED BERTH (Tertiary)	0	0	
GREEN LAYDOWN (Primary)	7	13	
ORANGE LAYDOWN (Secondary)	10	15	
RED LAYDOWN (Tertiary)	0	1	
NUMBER OF BERTHING DELAYS	14	22	
NUMBER OF MACHINERY ISSUES/REQUESTS NOT MET	0	0	

Attachment A

## **KPI 6**

Allocation of first point of rest

Port Kembla

Jul 1 – Dec 31, 2021

KPI 6 - PORT KEMBLA JULY

NUMBER	DATE	STEVE-DORE	VESSEL	VOYAGE	STARTING SHIFT	BERTH #	BERTH DELAY	LAYDOWN	MACHINERY REQUEST RECEIVED	MACHINERY REQUEST FILLED	MACHINERY ISSUES	NOTES
1	1/07/2021	QUBE	NOBLE ACE	089	DAY	105	N	B BLOCK,C BLOCK, D BLOCK, F BLOCK,, H BLOCK, PSHED AND N BLOCK	Y	Y		BERTH 105 UTILISED AS BOTH 107 AND 106 OCCUPIED
2	1/07/2021	QUBE	BUNUN ACE	64	EVE	103	N	DIRECT TO TRUCK	Y	Y		
3	1/07/2021	QUBE	STAR GLOBE	079B	DAY	103	N	DIRECT TO TRUCK	Y	Y		
4	2/07/2021	QUBE	MORNING LENA	OE112	DAY	107	N	EBLK1, GBLK1, 107STRG, 107CON, O BLOCK, Q BLOCK AND ESHED	Y	Y		
5	2/07/2021	LINX	TRANS LEADER	034	DAY	105	N	M BLOCK AND N BLOCK	Y	Y		BERTH 105 UTILISED AS BOTH 107 AND 106 OCCUPIED
6	2/07/2021	LINX	APHRODITE LEADER	022	NIGHT	107	N	107CON, A BLOCK, C BLOCK, O BLOCK AND ESHED	Y	Y		
7	2/07/2021	QUBE	BOSPOROUS HIGHWAY	117	NIGHT	105	N	B BLOCK, D BLOCK, F BLOCK, H BLOCK AND N BLOCK	Y	Y		BERTH 105 UTILISED AS BOTH 107 AND 106 OCCUPIED
8	3/07/2021	LINX	HOEGH MASAN	162	NIGHT	107	N	107CON, A BLOCK, Q BLOCK, ESHED AND LINKSPAN	Y	Y		
9	3/07/2021	QUBE	CARNATION ACE	073	NIGHT	105	Y	B BLOCK, M BLOCK, PSHED AND N BLOCK	Y	Y		BERTHING DELAYED FROM 1600HRS TO 2115HR DUE TO OPERATIONAL DELAYS WITH THE BOSPOROUS HIGHWAY. BERTH 105 UTILISED AS BOTH 107 AND 106 OCCUPIED. B BLOCK UTILISE AS H BLOCK FULL
10	4/07/2021	QUBE	GLORIOUS SAIKI	2103S	EVE	107	N	GSHED	Y	Y		
11	5/07/2021	LINX	BBC SEINE	53	NIGHT	107	N	EXPORT LOAD ONLY	Y	Y		
12	8/07/2021	QUBE	TRIUMPH ACE	160	EVE	105	N	B BLOCK, H BLOCK, PSHED AND N BLOCK	Y	Y		BERTH 105 UTILISED AS BOTH 107 AND 106 OCCUPIED
13	8/07/2021	QUBE	MORNING CLARA	2162	EVE	106	N	C BLOCK, D BLOCK, F BLOCK, H BLOCK, 106STRG, M BLOCK AND PSHED	Y	Y		C BLOCK UTILISED AS NOT ENOUGH SPACE ON THE WESTERN SIDE OF TERMINAL
14	9/07/2021	QUBE	GALAXY ACE	065	DAY	105	N	D BLOCK	Y	Y		BERTH 105 UTILISED AS BOTH 107 AND 106 OCCUPIED. H BLOCK NOT UTILISED AS FULL
15	9/07/2021	LINX	HOEGH TROVE	149	NIGHT	106	N	B BLOCK, C BLOCK, M BLOCK AND PSHED	Y	Y		C BLOCK UTILISED AS NOT ENOUGH SPACE ON THE WESTERN SIDE OF TERMINAL
16	10/07/2021	LINX	DIGNITY ACE	22	DAY	105	N	C BLOCK, D BLOCK, H BLOCK AND ESHED	Y	Y		BERTH 105 UTILISED AS BOTH 107 AND 106 OCCUPIED. H BLOCK NOT UTILISED AS FULL
17	11/07/2021	QUBE	TARAGO	AF129	DAY	106	N	C BLOCK, ESHED AND L BLOCK	Y	Y		C BLOCK UTILISED AS NOT ENOUGH SPACE ON THE WESTERN SIDE OF TERMINAL
18	11/07/2021	LINX	HERCULES LEADER	078	NIGHT	107	N	A BLOCK AND C BLOCK	Y	Y		
19	12/07/2021	QUBE	TRANS FUTURE 7	130	NIGHT	106	N	B BLOCK, D BLOCK, F BLOCK AND H BLOCK	Y	Y		
20	12/07/2021	QUBE	STANLEY BAY	8	NIGHT	103	N	DIRECT TO TRUCK	Y	Y		
21	13/07/2021	QUBE	PRIMROSE ACE	131	DAY	107	N	EBLK1, 107CON, A BLOCK, B BLOCK, C BLOCK, Q BLOCK, Q BLOCK AND E SHED	Y	Y		REQUIRED TO BERTH AT 107 PORTSIDE( MOL VESSELS ALWAYS BERTH STBD 107) DUE TO BERTH 105 AND 106 BEING OCCUPIED
22	14/07/2021	QUBE	DA QING XIA	49	DAY	106	N	L BLOCK AND PSHED	Y	Y		
23	14/07/2021	QUBE	GENIUS HIGHWAY	050	NIGHT	105	N	B BLOCK, F BLOCK, H BLOCK AND N BLOCK	Y	Y		BERTH 105 UTILISED AS BOTH 107 AND 106 OCCUPIED. H BLOCK NOT UTILISED AS FULL
24	15/07/2021	QUBE	DONG A METIS	006	EVE	107	N	EBLK1, A BLOCK, C BLOCK, D BLOCK AND ESHED	Y	Y		REQUIRED TO BERTH AT 107 PORTSIDE( MOL VESSELS ALWAYS BERTH STBD 107) SO AS TO DISCHARGE TRAIN MAFI'S EFFICIENTLY, D BLOCK UTILISED FOR MAFI LAYDOWN SO AS TO ALLOW EAST ACCESS TO RAIL.
25	16/07/2021	QUBE	VALIANT ACE	075	DAY	107	N	107CON, EBLK1 AND C BLOCK	Y	Y		REQUIRED TO BERTH AT 107 PORTSIDE( MOL VESSELS ALWAYS BERTH STBD 107) DUE TO BERTH 105 AND 106 BEING OCCUPIED
26	17/07/2021	QUBE	LYDDEN	003	DAY	107	N	107CON, EBLK1, 107STRG, C BLOCK, O BLOCK, Q BLOCK, D BLOCK AND ESHED	Y	Y		
27	18/07/2021	QUBE	WALRUS ACE	022	DAY	107	N	107CON, A BLOCK, F BLOCK, Q BLOCK AND ESHED	Y	Y		REQUIRED TO BERTH AT 107 PORTSIDE( MOL VESSELS ALWAYS BERTH STBD 107) DUE TO BERTH 105 AND 106 BEING OCCUPIED. C BLOCK NOT UTILISED AS FULL
28	18/07/2021	QUBE	GUNAGZHOU HIGHWAY	151	DAY	106	N	F BLOCK, H BLOCK, K BLOCK, L BLOCK AND PSHED	Y	Y		
29	18/07/2021	QUBE	LA SILLONAI	2112S	EVE	105	N	P SHED	Y	Y		
29	21/07/2021	QUBE	SIEM CURIE	022	DAY	107	N	A BLOCK AND C BLOCK	Y	Y		
30	21/07/2021	QUBE	ANNIKA K	01	EVE	105	Y	DIRECT TO TRUCK	Y	Y		BERTHING DELAYED DUE TO LA SILLONAI ALONGSIDE
31	22/07/2021	QUBE	LAVENDER ACE	077	DAY	107	N	C BLOCK, Q BLOCK AND ESHED	Y	Y		REQUIRED TO BERTH AT 107 PORTSIDE( MOL VESSELS ALWAYS BERTH STBD 107) DUE TO BERTH 105 AND 106 BEING OCCUPIED
32	23/07/2021	LINX	MERCURY LEADER	037	EVE	106	N	D BLOCK, F BLOCK, GSHED, H BLOCK, I BLOCK AND 106 STRG	Y	Y		GSHED UTILISED AS P SHED FULL FROM LA SILLONAI CARGO
33	23/07/2021	QUBE	DON JUAN	2163	NIGHT	107	N	107CON, A BLOCK, C BLOCK, O BLOCK AND ESHED	Y	Y		
34	24/07/2021	QUBE	UNDINE	OE113	EVE	107	N	EBLK1, GBLK1, 107CON, A BLOCK, C BLOCK, Q BLOCK AND ESHED	Y	Y		
35	25/07/2021	LINX	DAEDALUS LEADER	093	EVE	106	N	D BLOCK, F BLOCK, H BLOCK, I BLOCK AND 106STRG	Y	Y		
36	25/07/2021	QUBE	TIJUCA	AF130	EVE	107	N	107CON, EBLK1, GBLK1, A BLOCK, C BLOCK, O BLOCK, Q BLOCK AND GSHED	Y	Y		
37	26/07/2021	LINX	HOEGH TROTTER	26	NIGHT	107	N	107CON, I BLOCK, A BLOCK, C BLOCK, Q BLOCK, ESHED, LINKSPAN AND GSHED	Y	Y		
38	26/07/2021	QUBE	SIDER JASMINE	2106E	NIGHT	106	N	P SHED AND L BLOCK	Y	Y		
39	27/07/2021	QUBE	GLOBAL HIGHWAY	044	NIGHT	107	N	EBLK1, 107STRG, A BLOCK, B BLOCK, C BLOCK, Q BLOCK, F BLOCK, LINKSPAN AND GSHED	Y	Y		NUMEROUS LOCATIONS USED AS VESSEL DISCHARGED 1900 UNITS
40	30/07/2021	QUBE	BELUGA ACE	029	DAY	107	N	107CON, 107STRG, A BLOCK, C BLOCK, G SHED, O BLOCK AND Q BLOCK	Y	Y		REQUIRED TO BERTH AT 107 PORTSIDE( MOL VESSELS ALWAYS BERTH STBD 107) DUE TO BERTH 105 AND 106 BEING OCCUPIED
41	30/07/2021	QUBE	TONSBERG	AF131	DAY	107	N	EBLK1, GBLK1, 107CON, C BLOCK, Q BLOCK, AND GSHED	Y	Y		
42	31/07/2021	QUBE	IGUAZU HIGHWAY	032	DAY	107	N	107CON, 107STRG, C BLOCK, Q BLOCK AND GSHED	Y	Y		
43	31/07/2021	QUBE	ORCA ACE	026	DAY	106	N	F BLOCK, H BLOCK AND M BLOCK	Y	Y		
44	31/07/2021	QUBE	SUMMIT SW	21227	DAY	103	Y	DIRECT TO TRUCK	Y	Y		BERTHING DELAYED DUE TO STAR GLOBE ALONGSIDE ALONGSIDE

Legend - Berth # and Laydown

	Primary
	Secondary
	Tertiary

SUMMARY	LINX	QUBE
TOTAL VESSELS FOR MONTH	9	35
GREEN BERTH	7	24
ORANGE BERTH	2	11
RED BERTH	0	0
GREEN LAYDOWN	6	29
ORANGE LAYDOWN	1	4
RED LAYDOWN	2	2

<i>NUMBER OF BERTHING DELAYS</i>	<b>0</b>	<b>3</b>
<b>NUMBER OF MACHINERY ISSUES/REQUESTS NOT MET</b>	<b>0</b>	<b>0</b>

KPI 6 - PORT KEMBLA AUGUST

NUMBER	DATE	STEVE-DORE	VESSEL	VOYAGE	STARTING SHIFT	BERTH #	BERTH DELAY	LAYDOWN	MACHINERY REQUEST RECEIVED	MACHINERY REQUEST FILLED	MACHINERY ISSUES	NOTES
1	1/08/2021	QUBE	SAGITTARIUS LEADER	035	DAY	106	N	D BLOCK,F BLOCK,H BLOCK AND 106STRG	Y	Y		BERTHING DELAYED DUE TO SEASTAR ENDURANEC ALONGSIDE AT BERTH 106 AND REQUIREMENT FOR 2 X PCC BERTHS. ORIGINAL ETA 29/10/21 1200HRS - DELAYED TO 01/11/21.
2	1/08/2021	QUBE	TANNHAUSER	OE114	EVE	107	N	107CON, EBLK1, GBLK1,A BLOCK,ESHED, GSHED AND LINKSPAN				C BLOCK NOT UTILISED AS FULL
3	2/08/2021	LINX	TRANS LEADER	035	EVE	107	N	107CON,A BLOCK,C BLOCK, Q BLOCK AND GSHED	Y	Y		
4	5/08/2021	QUBE	TRANS FUTURE 6	131	EVE	105	N	F BLOCK	Y	Y		BERTH 105 UTILISED AS BOTH 107 AND 106 OCCUPIED. H BLOCK NOT UTILISED AS FULL
5	5/08/2021	QUBE	BOSPOROUS HIGHWAY	118	EVE	107	N	GBLK1, 107CON,A BLOCK,C BLOCK AND ESHED	Y	Y		
6	5/08/2021	QUBE	SUNKIANG	2105N	EVE	106	N	K BLOCK, PSBED AND GSHED	Y	Y		GSHED UTILISED DUE TO VOLUME OF STEEL AND REQUIREMENT FOR UNDERCOVER STOARGE
7	7/08/2021	LINX	HOEGH OSAKA	87	DAY	107	N	EBLK1, GBLK1, 107CON,C BLOCK,Q BLOCK AND GSHED	Y	Y		
8	7/08/2021	QUBE	EUROPEAN HIGHWAY	209	NIGHT	105	N	D BLOCK,F BLOCK,H BLOCK, PSBED AND N BLOCK	Y	Y		BERTH 105 UTILISED AS BOTH 107 AND 106 OCCUPIED.
9	8/08/2021	LINX	HOEGH ASIA	156	EVE	107	N	EBLK1, GBLK1,107CON, A BLOCK,C BLOCK,O BLOCK, Q BLOCK, ESHED, LINKSPAN AND LOT13	Y	Y		
10	8/08/2021	QUBE	DREAM ANGEL	021	EVE	106	N	B BLOCK AND D BLOCK	Y	Y		H BLOCK NOT UTILISED AS FULL
11	10/08/2021	QUBE	FIDELIO	AF133	DAY	107	N	EBLK1, GBLK1,107CON,C BLOCK,ESHED, LINKSPAN AND LOT13	Y	Y		
12	10/08/2021	QUBE	CATTLEA ACE	068	DAY	107	N	107CON,A BLOCK,C BLOCK, O BLOCK AND LINKSPAN	Y	Y		VESSEL BERTHED PORTSIDE AT BERTH 107 (MOL VESSELS ALWAYS BERTH STBD 107 ) DUE TO AVAILABLE SPACE CLOSER TO VESSEL
13	12/08/2021	QUBE	OPAL ACE	083	EVE	106	N	F BLOCK AND M BLOCK	Y	Y		H BLOCK NOT UTILISED AS FULL
14	13/08/2021	QUBE	INCE ATLANTIC	0721	DAY	103	N	DIRECT TO TRUCK	Y	Y		
15	13/08/2021	QUBE	TRIUMPH ACE	161	DAY	107	N	EBLK1,A BLOCK,C BLOCK O BLOCK AND ESHED	Y	Y		VESSEL BERTHED PORTSIDE AT BERTH 107 (MOL VESSELS ALWAYS BERTH STBD 107 ) DUE TO AVAILABLE SPACE CLOSER TO VESSEL
16	14/08/2021	QUBE	GLOVIS CHORUS	076	EVE	106	N	D BLOCK,F BLOCK, AND H BLOCK	Y	Y		
17	14/08/2021	QUBE	TYSLA	OE115	EVE	107	N	EBLK1,GBLK1,107CON,C BLOCK, Q BLOCK, ESHED AND GSHED	Y	Y		
18	15/08/2021	QUBE	MORNING CLARA	2164	EVE	107	N	107CON,107STRG,A BLOCK,B BLOCK,C BLOCK,O BLOCK, Q BLOCK, GSHED AND LINKSPAN	Y	Y		
19	15/08/2021	LINX	HERCULES LEADER	079	EVE	106	N	D BLOCK,I BLOCK AND M BLOCK	Y	Y		H BLOCK NOT UTILISED AS FULL
20	16/08/2021	LINX	TAURUS LEADER	048	EVE	107	N	A BLOCK,B BLOCK,C BLOCK, O BLOCK, Q BLOCK AND GSHED	Y	Y		
21	17/08/2021	LINX	GLOVIS CENTURY	20	EVE	106	N	D BLOCK, F BLOCK, H BLOCK, M BLOCK AND PSBED	Y	Y		
22	18/08/2021	QUBE	TRANS FUTURE 7	131	DAY	107	N	A BLOCK AND B BLOCK	Y	Y		C BLOCK NOT UTILISED AS FULL
23	20/08/2021	QUBE	TONGALA	OE116	DAY	107	N	GBLK1, 107CON, C BLOCK, Q BLOCK, ESHED AND GSHED				
24	20/08/2021	QUBE	TRANSCENDEN WISDOM	01	EVE	103	N	DIRECT TO TRUCK	Y	Y		
25	20/08/2021	QUBE	EMERALD ACE	072	EVE	106	N	F BLOCK,H BLOCK, I BLOCK AND PSBED	Y	Y		
26	21/08/2021	QUBE	THEMIS	EF115	DAY	107	N	EBLK1,107CON,Q BLOCK AND GSHED	Y	Y		
27	21/08/2021	LINX	SUN RUBY	001	EVE	106	N	EXPORT LOAD ONLY	Y	Y		
28	22/08/2021	QUBE	GENIUS HIGHWAY	051	DAY	105	N	D BLOCK,F BLOCK,I BLOCK AND PSBED	Y	Y		VESSEL BERTHED AT 105 DUE TO 107 AND 106 BEING OCCUPIED. H BLOCK NOT UTILISED AS FULL
29	22/08/2021	QUBE	SOUTHERN HIGHWAY	101	DAY	107	N	C BLOCK, O BLOCK, GSHED AND LINKSPAN	Y	Y		
30	23/08/2021	LINX	HOEGH TRADER	157	DAY	107	N	GBLK1,107CON,O BLOCK,Q BLOCK, D BLOCK AND E SHED	Y	Y		C BLOCK NOT UTILISED AS FULL.
31	25/08/2021	QUBE	TITANIA	EF116	DAY	107	N	EBLK1,107CON,C BLOCK, O BLOCK, ESHED,GSHED AND LINKSPAN	Y	Y		
32	26/08/2021	QUBE	MERMAID ACE	091	DAY	105	N	F BLOCK,H BLOCK AND L BLOCK				

33	26/08/2021	LINX	CEPHEUS LEADER	013	EVE	107	N	107CON,C BLOCK,O BLOCK, Q BLOCK AND ESHED				
34	27/08/2021	QUBE	DIAMOND QUEEN	40	EVE	103	Y	DIRECT TO TRUCK				BERTHING DELAYED DUE TO TRANSCENDEN WISDOM ALONGSIDE
35	28/08/2021	QUBE	MORNING CRYSTAL	2165	DAY	105	N	F BLOCK,H BLOCK,J BLOCK, K BLOCK, LBLOCK ANS PSHEDE				VESSEL BERTHED AT 105 DUE TO 107 AND 106 BEING OCCUPIED.
36	29/08/2021	QUBE	ORIENT GLORY	21/150	NIGHT	105	N	DIRECT TO TRUCK				
37	31/08/2021	QUBE	WALRUS ACE	023	DAY	107	N	107CON,A BLOCK,C BLOCK, O BLOCK AND GSHED				VESSEL BERTHED PORTSIDE AT BERTH 107 (MOL VESSELS ALWAYS BERTH STBD 107 ) DUE TO AVAILABLE SPACE CLOSER TO VESSEL

**Legend - Berth # and Laydown**

	Primary
	Secondary
	Tertiary

SUMMARY	LINX	QUBE	COMMENT
TOTAL VESSELS FOR MONTH	9	28	
GREEN BERTH	9	20	
ORANGE BERTH	0	9	
RED BERTH	0	0	
GREEN LAYDOWN	6	21	
ORANGE LAYDOWN	3	7	
RED LAYDOWN	0	0	
NUMBER OF BERTHING DELAYS	0	1	
NUMBER OF MACHINERY ISSUES/REQUESTS NOT MET	0	0	



KPI 6 - PORT EKMBLA SEPTEMBER

NUMBER	DATE	STEVE-DORE	VESSEL	VOYAGE	STARTING SHIFT	BERTH #	BERTH DELAY	LAYDOWN	MACHINERY REQUEST RECEIVED	MACHINERY REQUEST FILLED	MACHINERY ISSUES	NOTES
1	1/09/2021	LINX	HOEGH KOBE	66	DAY	107	N	EBLK1,C BLOCK, AND GSHED	Y	Y		
2	2/09/2021	QUBE	TRANS FUTURE 5	135	DAY	106	N	F BLOCK,H BLOCK ANS PSHED	Y	Y		
3	2/09/2021	QUBE	ALBERTO TOPIC	202101	DAY	105	N	DIRECT TO TRUCK	Y	Y		
4	2/09/2021	LINX	HOEGH TRIGGER	34	DAY	107	N	EBLK1,107CON,C BLOCK, Q BLOCK AND ESHED	Y	Y		
5	2/09/2021	QUBE	VICTORIOUS ACE	054	EVE	106	N	D BLOCK,F BLOCK,H BLOCK, M BLOCK AND PSHED	Y	Y		
6	3/09/2021	QUBE	MORNING PEACE	EE117	EVE	107	N	107CON,107STRG,A BLOCK,O BLOCK, ESHED AND GSHED	Y	Y		C BLOCK NOT UTILISED AS FULL
7	4/09/2021	QUBE	STAR HANSA	0621	EVE	106	N	K BLOCK	Y	Y		
8	9/09/2021	QUBE	DON JUAN	2166	EVE	107	N	EBLK1,107CON,107STRG,C BLOCK, Q BLOCK AND ESHED	Y	Y		
9	10/09/2021	QUBE	BULK ELECTRA	0821	DAY	103	N	DIRECT TO TRUCK	Y	Y		
10	10/09/2021	QUBE	EUROPEAN HIGHWAY	210	EVE	107	N	EBLK1, 107CON,A BLOCK,C BLOCK,O BLOCK,Q BLOCK AND ESHED	Y	Y		
11	10/09/2021	LINX	SAGITTARIUS LEADER	036	NIGHT	106	N	F BLOCK,H BLOCK, I BLOCK, M BLOCK AND PSHED	Y	Y		
12	12/09/2021	QUBE	BLUE RIDGE HIGHWAY	106	DAY	107	N	GBLK1,C BLOCK AND D BLOCK	Y	Y		D BLOCK UTILISED AS NOT ENOUGH SPACE IN C
13	12/09/2021	QUBE	SIDER JASMINE	2107E	EVE	106	N	GSHED, L BLOCK AND M BLOCK	Y	Y		GSHED UTILISED AS NOT ENOUGH SPACE IN PSHED
14	13/09/2021	QUBE	IGUAZU HIGHWAY	033	DAY	107	N	107CON,GBLK1,A BLOCK,C BLOCK,O BLOCK, Q BLOCK AND ESHED	Y	Y		
15	14/09/2021	LINX	DAEDALUS LEADER	094	NIGHT	107	N	EBLK1, 107CON,C BLOCK,Q BLOCK AND GSHED	Y	Y		
16	15/09/2021	QUBE	ETG SOUTHERN CROSS	0921	DAY	103	N	DIRECT TO TRUCK	Y	Y		
17	15/09/2021	LINX	DEMETER LEADER	015	EVE	105	N	F BLOCK,H BLOCK, PSHED AND N BLOCK	Y	Y		VESSEL BERTHED AT 105 DUE TO 107 AND 106 BEING OCCUPIED
18	15/09/2021	QUBE	ELEGANT ACE	065	EVE	107	N	EBLK1,107CON,C BLOCK,O BLOCK AND Q BLOCK	Y	Y		REQUIRED TO BERTH AT 107 PORTSIDE( MOL VESSELS ALWAYS BERTH STBD 107) DUE TO BERTH 105 AND 106 BEING OCCUPIED
19	16/09/2021	QUBE	MORNING CELESTA	EE118	EVE	105	N	E SHED,F BLOCK,H BLOCK,PSHED AND N BLOCK	Y	Y		VESSEL BERTHED AT 105 DUE TO 107 AND 106 BEING OCCUPIED.
20	16/09/2021	QUBE	TRANS FUTURE 6	132	NIGHT	107	N	A BLOCK,O BLOCK AND E SHED	Y	Y		C BLOCK NOT UTILISED AS NOT ENOUGH SPACE AVAILABLE.
21	17/09/2021	QUBE	MARVELOUS ACE	115	DAY	106	N	H BLOCK,M BLOCK AND PSHED	Y	Y		
22	17/09/2021	QUBE	MERWEDEGRACHT	2109	EVE	107	N	G SHED	Y	Y		
23	17/09/2021	QUBE	TAMERLANE	AF138	EVE	107	N	EBLK1,107CON,C BLOCK,Q BLOCK AND ESHED	Y	Y		
24	18/09/2021	QUBE	MORNING CROWN	EE119	DAY	106	N	F BLOCK,ESHED, H BLOCK, L BLOCK AND PSHED	Y	Y		
25	19/09/2021	QUBE	PROMINENT ACE	141	EVE	106	N	D BLOCK,USED2 AND M BLOCK	Y	Y		H BLOCK NOT UTILISED AS FULL
26	19/09/2021	LINX	VENUS LEADER	033	DAY	107	N	107CON, C BLOCK, O BLOCK AMD Q BLOCK	Y	Y		
27	20/09/2021	QUBE	GLOVIS CONDOR	007	EVE	107	N	107CON,EBLK1,A BLOCK,B BLOCK,C BLOCK,D BLOCK, O BLOCK, Q BLOCK AND ESHED	Y	Y		REQUIRED TO BERTH AT 107 PORTSIDE( MOL VESSELS ALWAYS BERTH STBD 107) SO AS TO DISCHARGE TRAIN MAFI'S EFFICIENTLY, D BLOCK UTILISED FOR MAFI LAYDOWN SO AS TO ALLOW EAST ACCES TO RAIL.
28	22/09/2021	LINX	HOEGH CHIBA	58	EVE	107	N	EBLK1,107CON,C BLOCK,Q BLOCK AND ESHED	Y	Y		
29	23/09/2021	LINX	HYPERION LEADER	104	EVE	106	N	H BLOCK	Y	Y		
30	24/09/2021	QUBE	SUNSHINE ACE	090	EVE	107	N	C BLOCK,O BLOCK AND Q BLOCK	Y	Y		VESSEL BERTHED PORTSIDE AT BERTH 107 (MOL VESSELS ALWAYS BERTH STBD 107 ) DUE TO AVAILABLE SPACE CLOSER TO VESSEL
31	24/09/2021	QUBE	DIJKSGRACHT	2106	EVE	106	N	K BLOCK AND L BLOCK	Y	Y		
32	24/09/2021	QUBE	SM NEW ORLEANS	0921	EVE	103	N	DIRECT TO TRUCK	Y	Y		
33	26/09/2021	QUBE	BOHEME	OE122	EVE	107	N	EBLK1,107CON,A BLOCK,Q BLOCK AND ESHED	Y	Y		
34	27/09/2021	QUBE	GENIUS HIGHWAY	052	DAY	107	N	A BLOCK,B BLOCK, Q BLOCK AND ESHED	Y	Y		
35	28/09/2021	QUBE	KING ISLAND	2106S	EVE	105	N	PSHED, N BLOCK AND GSHED	Y	Y		GSHED UTILISED AS NOT ENOUGH UNDERCOVER STOARGE IN PSHED
36	29/09/2021	QUBE	THERMOPYLAE	WF118	DAY	107	N	EBLK1,107CON,C BLOCK, Q BLOCK AND ESHED	Y	Y		
37	30/09/2021	QUBE	GRAND VICTORY	005	NIGHT	107	N	107CON,C BLOCK,Q BLOCK AND ESHED	Y	Y		

Legend - Berth # and Laydown

Primary
Secondary
Tertiary

SUMMARY	LINX	QUBE	COMMENT
TOTAL VESSELS FOR MONTH	8	29	
GREEN BERTH	7	25	
ORANGE BERTH	1	4	
RED BERTH	0	0	
GREEN LAYDOWN	8	23	
ORANGE LAYDOWN	0	6	
RED LAYDOWN	0	0	
NUMBER OF BERTHING DELAYS	0	0	
NUMBER OF MACHINERY ISSUES/REQUESTS NOT MET	0	0	

KPI 6 - Port Kembla OCTOBER

NUMBER	DATE	STEVE-DORE	VESSEL	VOYAGE	STARTING SHIFT	BERTH #	BERTH DELAY	LAYDOWN	MACHINERY REQUEST RECEIVED	MACHINERY REQUEST FILLED	MACHINERY ISSUES	NOTES
1	1/10/2021	QUBE	TRANS FUTURE 7	132	DAY	107	N	C BLOCK AN O BLOCK	Y	Y		
2	3/10/2021	QUBE	CARMEN	AF141	DAY	107	N	EBLK, 107CON,C BLOCK AND E SHED	Y	Y		
3	3/10/2021	QUBE	BRILLIANT ACE	086	DAY	106	N	G SHED, H BLOCK AND I BLOCK	Y	Y		ESHED UTILISED FOR BBLK LAYDOWN DUE TO G SHED AND P SHED BEING FULL OF IMPORT STEEL
4	4/10/2021	LINX	HERCULES LEADER	080	EVE	107	N	GBLK, 107CON, A BLOCK, C BLOCK, O BLOCK AND ESHED	Y	Y		
5	5/10/2021	QUBE	KOKOPO CHIEF	2107S	DAY	106	N	GSHED, M BLOCK AND N BLOCK	Y	Y		
6	5/10/2021	QUBE	ORCA ACE	027	DAY	105	N	F BLOCK,H BLOCK, PSBED AND N BLOCK	Y	Y		BERTH 105 UTILISED AS BOTH 107 AND 106 OCCUPIED
7	6/10/2021	LINX	IRIS LEADER	043	EVE	107	N	107CON,A BLOCK, C BLOCK, O BLOCK, Q BLOCK AND E SHED	Y	Y		
8	6/10/2021	QUBE	AFRICAN ROOK	21/160	DAY	103	N	DIRECT TO TRUCK	Y	Y		
9	7/10/2021	LINX	CEPHEUS LEADER	014	EVE	106	N	H BLOCK AND F BLOCK	Y	Y		
10	8/10/2021	LINX	HOEGH TROOPER	191	EVE	107	N	EBLK1, 107CON,C BLOCK,Q BLOCK AND GSHED	Y	Y		
11	10/10/2021	QUBE	MORNING PROSPERITY	OE121	DAY	107	N	EBLK1, GBLK1, 107CON,A BLOCK,Q BLOCK, ESHED AND GSHED	Y	Y		C BLOCK UNAVAILABLE DUE TO PREVIOUS VESSELS DISCHARGING INTO C BLOCK
12	11/10/2021	QUBE	TAMESIS	AF140	DAY	107	N	EBLK1, GBLK1, Q BLOCK,ESHED AND GSHED	Y	Y		
13	11/10/2021	QUBE	SEAL ISLAND	48	DAY	103	N	DIRECT TO TRUCK	Y	Y		
14	13/10/2021	LINX	HOEGH TRACER	32	NIGHT	107	N	EBLK1, GBLK1, 107CON,A BLOCK,C BLOCK AND GSHED	Y	Y		
15	13/10/2021	QUBE	MORNING CRYSTAL	2167	DAY	106	N	F BLOCK, H BLOCK, I BLOCK AND PSBED	Y	Y		
16	13/10/2021	QUBE	EGE S	5	NIGHT	105	N	DIRECT TO TRUCK	Y	Y		
17	14/10/2021	QUBE	WALRUS ACE	024	EVE	106	N	F BLOCK AND 106STRG	Y	Y		
18	14/10/2021	QUBE	CRYSTAL ACE	079	DAY	107	N	EBLK1,107CON,C BLOCK, O BLOCK, Q BLOCK AND GSHED	Y	Y		
19	14/10/2021	LINX	DORADO LEADER	107	NIGHT	106	N	D BLOCK,F BLOCK,H BLOCK, 106STRG AND PSBED	Y	Y		
20	15/10/2021	QUBE	TRANS FUTURE 5	136	NIGHT	107	N	C BLOCK,O BLOCK AND GSHED	Y	Y		
21	16/10/2021	QUBE	BLUE RIDGE HIGHWAY	107	DAY	107	N	EBLK1, 107CON,C BLOCK,O BLOCK AND GSHED	Y	Y		
22	16/10/2021	QUBE	ETERNAL ACE	085	DAY	106	N	B BLOCK,D BLOCK,F BLOCK, I BLOCK, 106STRG AND PSBED	Y	Y		H BLOCK NOT UTILISED AS FULL FROM PREVIOUS VESSEL DISCHARGE
23	17/10/2021	QUBE	GOLDEN TRADER	211010	EVE	103	N	DIRECT TO TRUCK	Y	Y		
24	17/10/2021	QUBE	PARSIFAL	AF144	EVE	107	N	GBLK1,A BLOCK,Q BLOCK, ESHED AND GSHED	Y	Y		C BLOCK NOT UTILISED AS FULL FROM PREVIOUS VESSELS
25	19/10/2021	QUBE	DONG A METIS	007	DAY	107	N	107CON,A BLOCK, CBLOCK, Q BLOCK, D BLOCK AND E SHED	Y	Y		REQUIRED TO BERTH AT 107 PORTSIDE( MOL VESSELS ALWAYS BERTH STBD 107) SO AS TO DISCHARGE TRAIN MAFI'S EFFICIENTLY, D BLOCK UTILISED FOR MAFI LAYDOWN SO AS TO ALLOW EAST ACCESS TO RAIL.
26	19/10/2021	QUBE	FREEDOM ACE	144	EVE	106	N	H BLOCK,L BLOCK AND P SHED	Y	Y		
27	19/10/2021	QUBE	BELLE ROSE	1021	EVE	105	N	DIRECT TO TRUCK	Y	Y		
28	20/10/2021	QUBE	PASSAMA	2168	DAY	106	N	H BLOCK,I BLOCK, L BLOCK AND PSBED	Y	Y		
29	21/10/2021	QUBE	ONYX ACE	082	DAY	107	N	C BLOCK,Q BLOCK AND ESHED	Y	Y		
30	22/10/2021	QUBE	ULTRA PROGRESSION	2B	DAY	103	N	DIRECT TO TRUCK	Y	Y		
31	22/10/2021	LINX	ZENITH LEADER	105	EVE	107	N	A BLOCK,C BLOCK,OBLOCK AND QBLOCK	Y	Y		
32	24/10/2021	LINX	SEASTAR ENDURANCE	002	EVE	106	N	EXPORT STEEL	Y	Y		
33	25/10/2021	QUBE	SALOME	AF146	EVE	107	N	EBLK1, 107CON,C BLOCK, Q BLOCK AND GSHED	Y	Y		
34	27/10/2021	QUBE	TRANS FUTURE 6	133	DAY	107	N	C BLOCK AND O BLOCK	Y	Y		
35	28/10/2021	QUBE	PACIFIC ACHIEVEMENT	1021	DAY	103	N		Y	Y		
36	28/10/2021	QUBE	GRAVITY HIGHWAY	054	EVE	107	N	EBLK1, 107CON,C BLOCK,Q BLOCK AND ESHED	Y	Y		
37	29/10/2021	QUBE	GENIUS HIGHWAY	053	DAY	107	N	107CON,A BLOCK, Q BLOCK AND ESHED	Y	Y		C BLOCK NOT UTILISED AS FULL FROM PREVIOUS VESSELS
38	31/10/2021	QUBE	ORCHID ACE	118	DAY	107	N	GBLK1,107CON,C BLOCK AND Q BLOCK	Y	Y		

**Legend - Berth # and Laydown**  
 Primary  
 Secondary  
 Tertiary

SUMMARY	LINX	QUBE
TOTAL VESSELS FOR MONTH	8	30
GREEN BERTH	8	28
ORANGE BERTH	0	2
RED BERTH	0	0
GREEN LAYDOWN	8	25
ORANGE LAYDOWN	0	5
RED LAYDOWN	0	0
NUMBER OF BERTHING DELAYS	0	0
NUMBER OF MACHINERY ISSUES/REQUESTS NOT MET	0	0

KPI 6 - Port Kembla NOVEMBER

NUMBER	DATE	STEVE-DORE	VESSEL	VOYAGE	STARTING SHIFT	BERTH #	BERTH DELAY	LAYDOWN	MACHINERY REQUEST RECEIVED	MACHINERY REQUEST FILLED	MACHINERY ISSUES	NOTES
1	1/11/2021	QUBE	AAL MELBOURNE			107	Y	DIRECT TO TRUCK	Y	Y		BERTHING DELAYED DUE TO SEASTAR ENDURANEC ALONGSIDE AT BERTH 106 AND REQUIREMENT FOR 2 X PCC BERTHS. ORIGINAL ETA 29/10/21 1200HRS - DELAYED TO 01/11/21.
2	1/11/2021	QUBE	INFINITY K	202105	NIGHT	105	Y	DIRECT TO TRUCK	Y	Y		BERTHING DELAYED DUE TO BELLE ROSE ALONGSIDE AT BERTH 105 - 105 REQUIRED FOR DISCHARGE. ORIGINAL ETA 26/10/21 - DELAYED TO 31/10/21
3	1/11/2021	LINX	MONOCEROS LEADER	021	EVE	107	N	GBLK1, 107CON,C BLOCK,Q BLOCK AND ESHED	Y	Y		
4	2/11/2021	LINX	GRAND CHOICE	15	EVE	107	N	EBLK1, GBLK1,107CON 107STG,C BLOCK, O BLOCK AND ESHED	Y	Y		
5	3/11/2021	QUBE	VICTORIOUS ACE	055	DAY	107	Y	EBLK1,107CON, ABLOCK AND CBLOCK	Y	Y		BERTHING DELAYED A SHIFT DUE TO BERTH 107 BEING THE ONLY AVAILABLE BERTH AND THE GRAND CHOICE WORKING PRIOR
6	3/11/2021	QUBE	SIDER JASMINE	2108E	EVE	103	Y	103 STRINGER	Y	Y		BERTHING DELAYED DUE TO 3 BERTHS OCCUPIED AT MAIN TERMINAL AND THE PACIFIC ACHIVEMENT WORKING AT BERTH 103. ORIGINAL ETA PM 29/10/21 - DELAYED TO AM 03/11/21
7	4/11/2021	QUBE	TIANJIN HIGHWAY	144	NIGHT	107	Y	EBLK1,C BLOCK AND Q BLOCK	Y	Y		BERTHING DELAYED A SHIFT DUE TO BERTH 107 BEING THE ONLY AVAILABLE BERTH AND THE VICTORIOUS ACE WORKING PRIOR. ORIGINAL ETA 0500 03/11/21 - DELAYED TO 2045 03/11/21.
8	4/11/2021	QUBE	TOREADOR	OE123	DAY	106	Y	GSHED, H BLOCK,L BLOCK AND PSHED	Y	Y		BERTHING DELAYED DUE TO BERTH CONGESTION. ORIGINAL ETA 1830 02/11/21 - DELAYED TO 0430 03/11/21 - DELAYED TO 1330 03/11/21 AND FINALLY DELAYED TO 0042 04/11/21.
9	4/11/2021	LINX	HOEGH TROVE	151	NIGHT	107	N	GBLK1, 107CON,C BLOCK, QBLOCK, GSHED AND I BLOCK	Y	Y		VESSEL BERTHED PM 04/11/21 AND WAS REQUIRED TO BE TREATED AMD ISNPECTED BY DAWE WHILST ALONGSIDE. OPERATIONS COMMENCED 1500HRS 05/11/21
10	6/11/2021	QUBE	TOKYO CAR	2120	EVE	106	N	F BLOCK,H BLOCK, LBLOCK AND PSHED	Y	Y		
11	7/11/2021	LINX	VENUS LEADER	034	DAY	107	N	A BLOCK,O BLOCK AND GSHED	Y	Y		C BLOCK NOT UTILISED AS FULL FROM PRVIOUS VESSELS
12	7/11/2021	QUBE	PROMINENT ACE	142	EVE	106	N	D BLOCK,F BLOCK,106STRG AND PSHED	Y	Y		H BLOCK NOT UTILISED AS FULL
13	9/11/2021	LINX	HOEGH ST PETERSBURG	71	DAY	107	N	EBLK1,GBLK1,107CON,A BLOCK,C BLOCK, O BLOCK AND ESHED	Y	Y		
14	9/11/2021	QUBE	VICTORIA HIGHWAY	031	DAY	106	N	D BLOCK,H BLOCK, K BLOCK, L BLOCK, M BLOCK AND PSHED	Y	Y		
15	10/11/2021	QUBE	CAPITAINE KUPE	0001E	NIGHT	105	N	EXPORT STEEL	Y	Y		
16	11/11/2021	QUBE	COURAGEOUS ACE	145	DAY	107	N	EBLK1,107CON,C BLOCK AND Q BLOCK	Y	Y		VESSEL BERTHED PORTSIDE AT BERTH 107 (MOL VESSELS ALWAYS BERTH STBD 107 ) DUE TO AVAILABLE SPACE CLOSER TO VESSEL
17	11/11/2021	QUBE	TS ECHO	2108S	EVE	106	N	DIRECT TO TRUCK	Y	Y		
18	12/11/2021	QUBE	MORNING CLARA	2169	DAY	107	N	EBLK1,A BLOCK,C BLOCK, Q BLOCK AND ESHED	Y	Y		
19	12/11/2021	QUBE	TRANS FUTURE 7	133	DAY	105	N	F BLOCK,H BLOCK AND PSHED	Y	Y		VESSEL BERTHED AT 105 DUE TO 107 AND 106 BEING OCCUPIED.
20	13/11/2021	LINX	POSITIVE LEADER	88	NIGHT	105	N	D BLOCK, F BLOCK,106STRG AND PSHED	Y	Y		VESSEL BERTHED AT 105 DUE TO 107 AND 106 BEING OCCUPIED. H BLOCK NOT UTILISED AS FULL FROM PREVIOUS VESSELS VEHICLES
21	13/11/2021	QUBE	MERIDIAN ACE	181	EVE	107	N	A BLOCK,C BLOCK,O BLOCK,Q BLOCK AND ESHED	Y	Y		VESSEL BERTHED PORTSIDE AT BERTH 107 (MOL VESSELS ALWAYS BERTH STBD 107 ) DUE TO 105 AND 106 BEING OCCUPIED
22	15/11/2021	QUBE	TANIKAZE	41	DAY	103	N	DIRECT TO TRUCK	Y	Y		
23	16/11/2021	QUBE	THALATTA	OF122	EVE	107	N	GBLK1,C BLOCK,ESHED, LINKSPAN AND I BLOCK				
24	17/11/2021	LINX	HOEGH DETROIT	102	NIGHT	107	N	EBLK1,GBLK1,107CON,C BLOCK, OBLOCK,ESHED AMD LINKSPAN	Y	Y		

25	18/11/2021	QUBE	ANNE METTE BULKER	21095	DAY	106	N	ESHED,GSHED,LBLOCK, M BLOCK AND PSHEd	Y	Y	ESHED UTILISED AS NOT ENOUGH AVIALABLE SPACE IN P AND GSHEDS
26	18/11/2021	QUBE	ORCA ACE	028	EVE	105	N	F BLOCK,H BLOCK,PSEHD AND N BLOCK	Y	Y	VESSEL BERTHED AT 105 DUE TO 107 AND 106 BEING OCCUPIED.
27	18/11/2021	LINX	GRAND COSMO	107	DAY	105	N	D BLOCK,H BLOCK,PSHEd AND N BLOCK			VESSEL BERTHED AT 105 DUE TO 107 AND 106 BEING OCCUPIED.
28	20/11/2021	QUBE	GLOVIS COUGAR	008	DAY	107	N	107CON,C BLOCK,O BLOCK,Q BLOCK, D BLOCK AND ESHED			LIVE BUG FOUND ONBOARD VESSEL DURING DISCHARGE. CARGO WAS PARTIALLY DISCHARGED. VESSEL LEFT BERTHE AND WENT TO ANCHORAGE FOR TREATMENT.REQUIRED TO BERTH AT 107 PORTSIDE( MOL VESSELS ALWAYS BERTH STBD 107) SO AS TO DISCHARGE TRAIN MAFI'S EFFICIENTLY
29	20/11/2021	QUBE	MARVELOUS ACE	116	EVE	105	N	F BLOCK,PSHEd AND N BLOCK	Y	Y	VESSEL BERTHED AT 105 DUE TO 107 AND 106 BEING OCCUPIED. H BLOCK NOT UTILISED AS FULL FROM PREVIOUS VESSEL DISCHARGE
30	21/11/2021	QUBE	THEBEN	OE124	DAY	107	Y	EBLK,GBLK1,107CON,107STRG, A BLOCK, O BLOCK, ESHED AND I BLOCK	Y	Y	C BLOCK NOT UTILISED AS FULL. BERTHING DELAYED DUE TO BUG ISSUE ON THE GLOVIS COUGAR
31	21/11/2021	QUBE	GRACIOUS ACE	075	NIGHT	107	Y	107CON,107STRG, A BLOCK AND Q BLOCK	Y	Y	VESSEL BERTHED PORTSIDE AT BERTH 107 (MOL VESSELS ALWAYS BERTH STBD 107 ) DUE TO 105 AND 106 BEING OCCUPIED. C BLOCK NOT UTILISED AS FULL. BERTHING DELAYED DUE TO BUG ISSUE ON THE GLOVIS COUGAR
32	22/11/2021	QUBE	MORNING CRYSTAL	2121	EVE	107	N	EBLK1,GBLK1,107CON, C BLOCK, O BLOCK, Q BLOCK AND GSHED			
33	22/11/2021	LINX	RHEA LEADER	103	EVE	105	N	D BLOCK,F BLOCK, H BLOCK,PSHEd AND N BLOCK			VESSEL BERTHED AT 105 DUE TO 107 AND 106 BEING OCCUPIED.
34	23/11/2021	QUBE	BLUE RIDGE HIGHWAY	108	DAY	107	N	A BLOCK,C BLOCK, O BLOCK AND Q BLOCK			
35	23/11/2021	QUBE	KOKOPO CHIEF	0365	EVE	106	N	USED2 AND M BLOCK			
36	23/11/2021	QUBE	DONAGRACHT	2108	NIGHT	105		DIRECT TO TRUCK AND N BLOCK			
37	24/11/2021	QUBE	AMBER ARROW	130	EVE	107	N	EBLK1,GBLK1,107CON, A BLOCK, C BLOCK, O BLOCK AND GSHED			
38	25/11/2021	QUBE	GLOVIS COUGAR	008	DAY	105	N	NIL DISCHARGE			BERTHED AT 105 AS 107 WAS NOT AVAILABLE - 107 REQUIRED FOR TRAIN DISCHARGE
39	26/11/2021	QUBE	GLOVIS COUGAR	8	DAY	107	N	107CON,C BLOCK,O BLOCK,Q BLOCK, D BLOCK AND ESHED			
40	27/11/2021	QUBE	TRANS FUTURE 5	137	NIGHT	105		F BLOCK,H BLOCK AND PSHEd			VESSEL BERTHED AT 105 DUE TO 107 AND 106 BEING OCCUPIED.
41	29/11/2021	LINX	ZENITH LEADER	106	NIGHT	107	N	A BLOCK,C BLOCK,O BLOCK, Q BLOCK AND GSHED			
42	29/11/2021	QUBE	TURANDOT	2170	DAY	106	N	D BLOCK,F BLOCK,USED2,L BLOCK AND PSHEd			H BLOCK NOT UTILISED AS FULL FROM PREVIOUS VESSELS.

43	29/11/2021	QUBE	BULK DARCO	2111	DAY	103	N	DIRECT TO TRUCK				
44	29/11/2021	QUBE	LA SAUTERNAIS	2851	EVE	105	N	P SHED				
45	30/11/2021	LINX	GRAND VENUS	007	NIGHT	106	N	B BLOCK,D BLOCK, H BLOCK,I BLOCK, L BLOCK AND PSUED				

**Legend - Berth # and Laydown**

	Primary
	Secondary
	Tertiary

<u>SUMMARY</u>	LINX	QUBE	COMMENT
TOTAL VESSELS FOR MONTH	11	34	
GREEN BERTH	8	25	
ORANGE BERTH	3	9	
RED BERTH	0	0	
GREEN LAYDOWN	9	28	
ORANGE LAYDOWN	2	6	
RED LAYDOWN	0	0	
NUMBER OF BERTHING DELAYS	0	8	
NUMBER OF MACHINERY ISSUES/REQUESTS NOT MET	0	0	

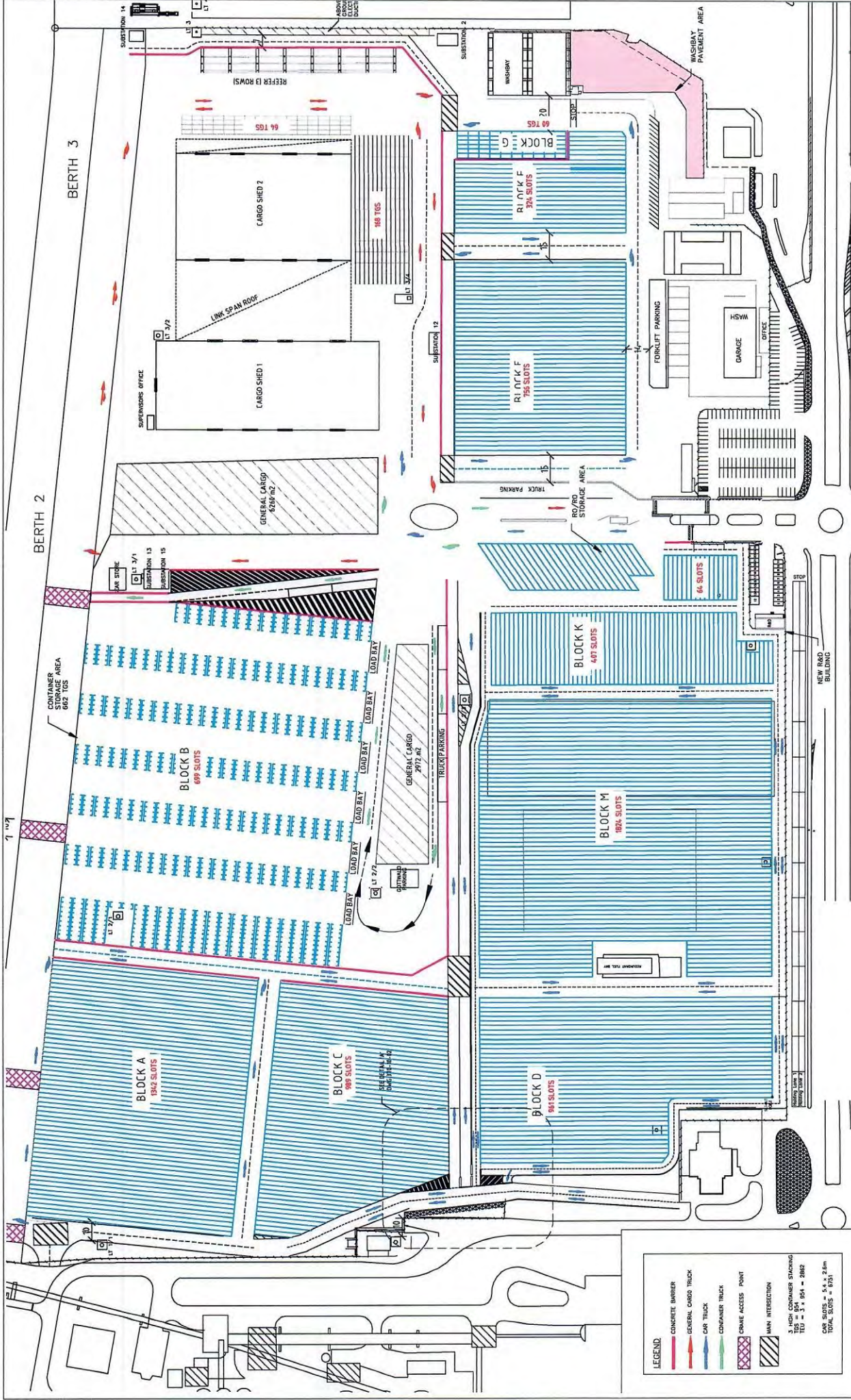


Secondary  
Tertiary

<i>GREEN BERTH</i>	7	16
<i>ORANGE BERTH</i>	3	10
<i>RED BERTH</i>	0	0
<i>GREEN LAYDOWN</i>	9	21
<i>ORANGE LAYDOWN</i>	1	6
<i>RED LAYDOWN</i>	0	0
<i>NUMBER OF BERTHING DELAYS</i>	0	3
<i>NUMBER OF MACHINERY ISSUES/REQUESTS NOT MET</i>	0	0

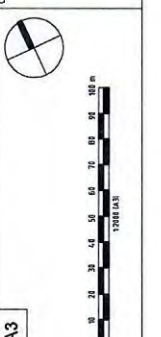


**PART B – TERMINAL LAYOUT FISHERMAN ISLANDS AND PORT KEMBLA**

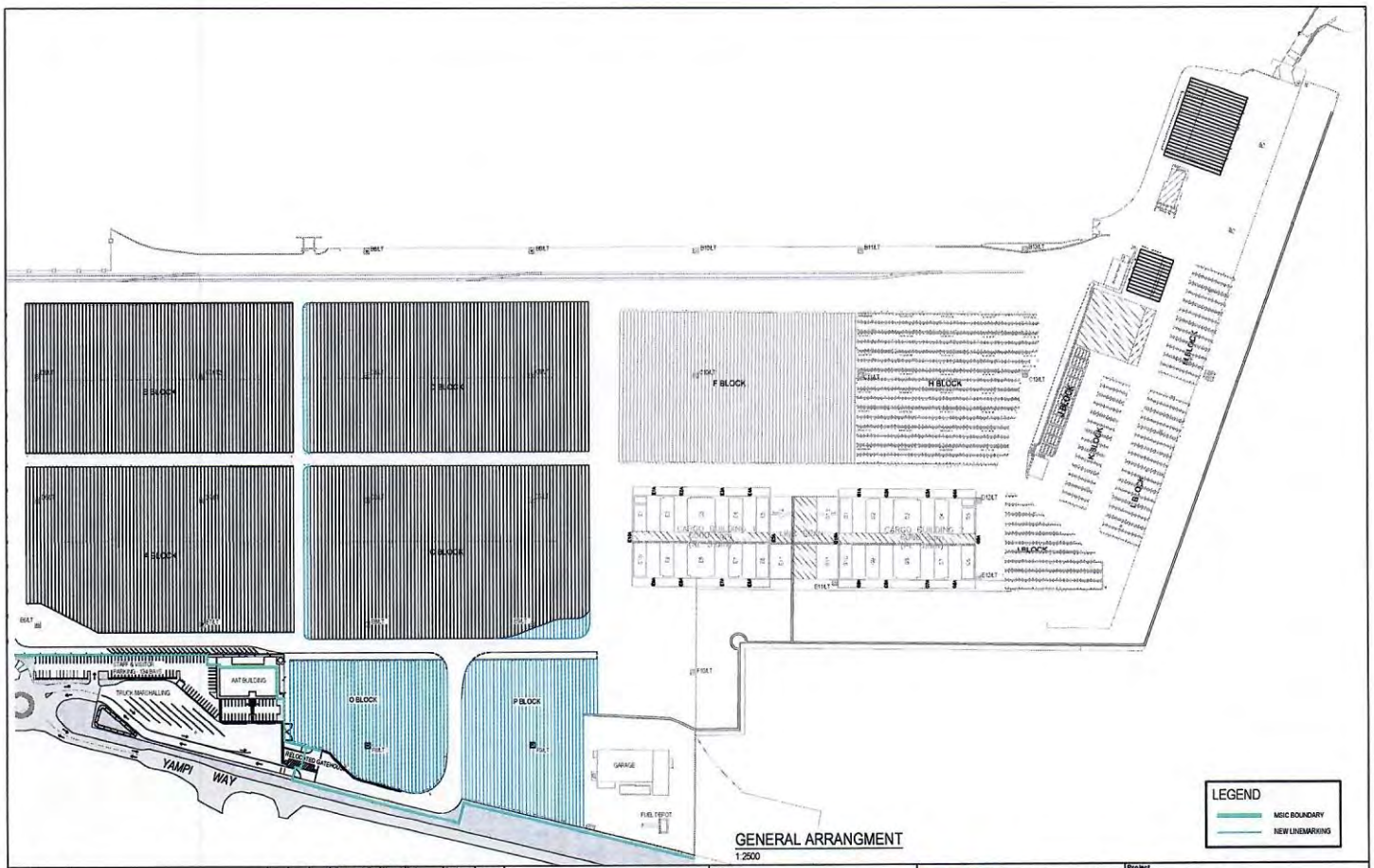




Project		AAT FISHERMAN ISLANDS TERMINAL	
Drawing Title		C1 - LINEMARKING WORKS GENERAL ARRANGEMENT	
Client		James Rose Consulting ABN 64 175 064 811	
Date		04/05/19	
Scale		A3 1:2000	
Prepared By	FL	Checked By	DM
Verified By	DN	Approved By	DM
Date	04/05/19	Date	04/05/19
Drawn By	FL	Drawn By	DM
Checked By	DN	Checked By	DM
Approved By	DM	Approved By	DM
Date	04/05/19	Date	04/05/19
Horizontal	DM	Vertical	DM
BY	FL	BY	DM
Ver.	DN	Ver.	DM
App.	DM	App.	DM
REV	DATE	REV	DATE
B	04/05/19	A	20/05/19
BLOCK B AMENDED FOR INFORMATION			
REVISIONS AND ISSUES			

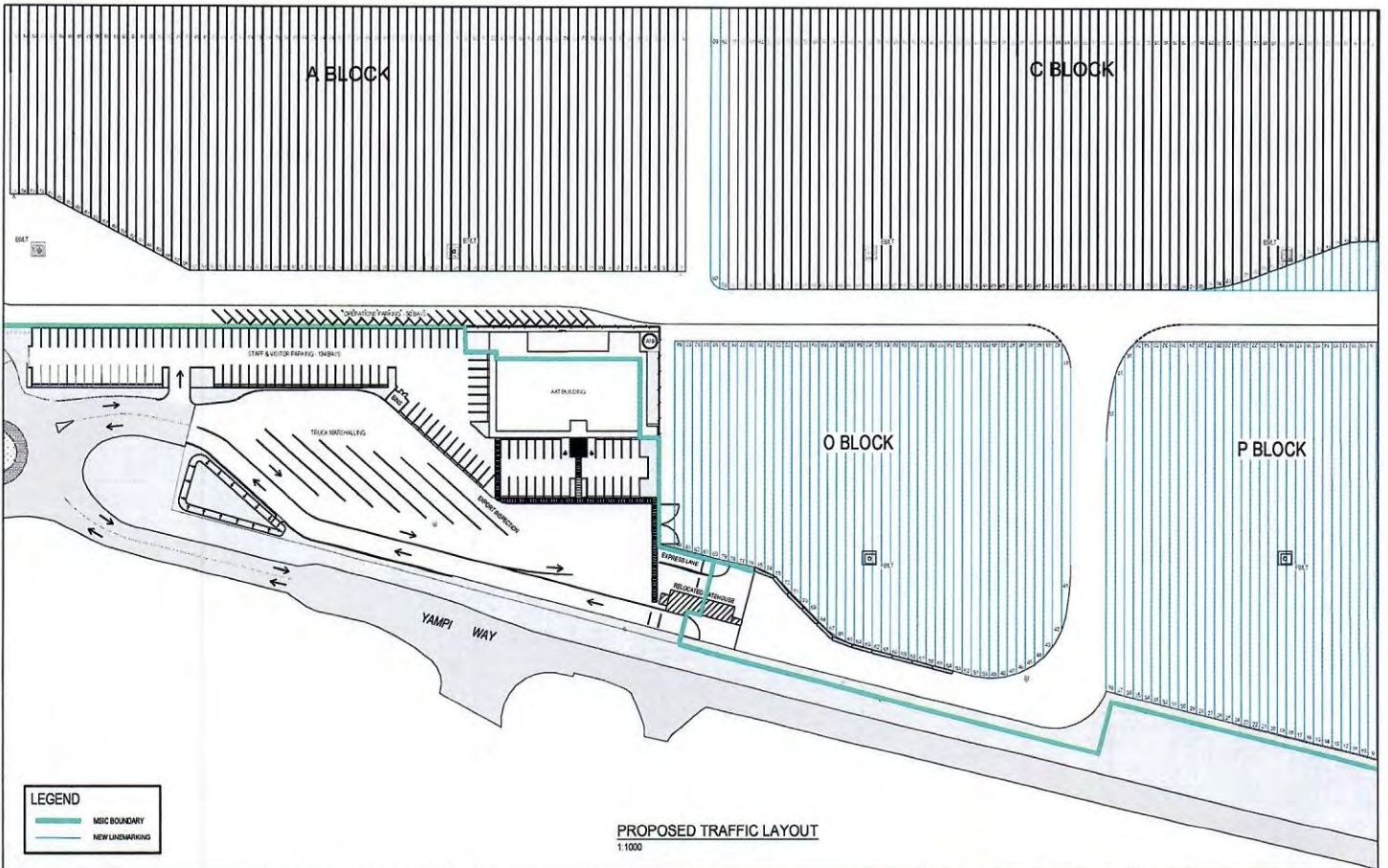
James Rose Consulting  
 Unit F21, 1-15 Barr Street  
 Brisbane QLD 4001  
 PH: 07 3555 8585  
 FAX: 07 3555 8589  
 info@jamesrose.com.au  
 www.jamesrose.com.au







B 31/10/10 REISED FOR CLIENT COMMENTS A 16/10/10 DRAFT FOR CLIENT REVIEW		PL DM DM PL DM DM	Prepared By PL Verified By DM Approved By DM Horizontal Datum M/A Vertical Datum AMD	Signed Date 31/10/10 Signed Date 31/10/10 Signed Date 31/10/10	Scale 1:2500 A3	0 20.0 40.0 70.0 100.0 130.0 m 1:2500 (A3)	Client:  Australian Amalgamated Terminals	 James Rose Consulting ABN 64 175 064 511 Unit F21,1-15 Barr Street SALAMAN NSW 2041 PH 02 9555 8588 FAX 02 9555 8599 mail@jamesrose.com.au www.jamesrose.com.au	Project AAT PORT KEMBLA TERMINAL REDEVELOPMENT Drawing Title GENERAL ARRANGEMENT Status: DRAFT Project No. 433 Drawing No. 433-C-01 Rev. 8
-----------------------------------------------------------------------------	--	----------------------	-----------------------------------------------------------------------------------------------------------------	-------------------------------------------------------------------------------	-----------------------	-----------------------------------------------	-------------------------------------------------------------------------------------------------------------------------------------	----------------------------------------------------------------------------------------------------------------------------------------------------------------------------------------------------------------------------------------------------------------------------	--------------------------------------------------------------------------------------------------------------------------------------------------------------------



0 31/10/19 REVISED FOR CLIENT COMMENTS 1 16/10/19 DRAFT FOR CLIENT REVIEW		PL PL DM DM BY NCR APP	Prepared By PL Signed Date 31/10/19 Verified By DM Signed Date 31/10/19 Approved By DM Signed Date 31/10/19 Horizontal Datum N/A Vertical Datum AND	Scale 1:1000 A3 	Client: <b>AAT</b> Australian Amalgamated Terminals	<b>JRC</b> James Rose Consulting ABN 64 175 064 511 Unit F21.1-15 Barr Street BALMAIN NSW 2041 PH 02 9559 8585 FAX 02 9555 8599 mail@jamesrose.com.au www.jamesrose.com.au	Project: AAT PORT KEMBLA WOLLONGONG, NSW Drawing Title: PROPOSED TRAFFIC LAYOUT Status: DRAFT Project No: 433 Drawing No: 433-2-02 Rev: 0
------------------------------------------------------------------------------	--	---------------------------	-----------------------------------------------------------------------------------------------------------------------------------------------------------------	---------------------	--------------------------------------------------------	-------------------------------------------------------------------------------------------------------------------------------------------------------------------------------------------------	-------------------------------------------------------------------------------------------------------------------------------------------------------------

## **PART C: TERMINAL USERS IN WHICH QUBE OR A QUBE RELATED ENTITY HAS AN INTEREST**

Qube or a Qube Related Entity has a direct or indirect interest greater than or equal to 20% in the following Terminal Users who provided Stevedoring Services or PDI Operator Services at the following Terminals during the period covered by this Compliance Report:

### **Port Kembla Terminal**

Qube Ports Pty Ltd ACN 123 021 492

Prixcar Services Pty Ltd ACN 007 063 505

### **Brisbane Terminal**

Qube Ports Pty Ltd ACN 123 021 492

Prixcar Services Pty Ltd ACN 007 063 505

**AAT SEMI-ANNUAL COMPLIANCE REPORT – MELBOURNE TERMINAL**

**REPORT PERIOD: 1<sup>ST</sup> Jul 2021 to 31<sup>ST</sup> Dec 2021**

**DATE OF REPORT: 17<sup>th</sup> February 2022**

**1. Complaints raised either directly with AAT or under the Non-Price Dispute Resolution Process**

No.	Type of Complaint	Outcome of the Complaint
NIL		

**2. Breaches of Clause 6 – Confidentiality and Ring-Fencing**

No.	Type of Breach	Details of Breach	Response to the Breach
NIL			

**3. Access Services**

Details of any circumstance in which AAT offers Access Services to Qube or any other Qube Related Entity that are more favourable than the terms offered to any other Service Provider.

**NIL**

**4. Contractual Arrangements**

Details of any offer, or any contractual arrangement between AAT and a shipping line, that involved terms that:

- (A) link or otherwise relate in any way to the shipping line using Qube or a Qube Related Entity to supply Terminal Services at Melbourne Terminal;
- (B) obliged the shipping line to engage suppliers of Terminal Services that met certain requirements that only Qube or a Qube Related Entity could satisfy;

as described in clause 5 of the Variation to the Undertaking.

**NIL**



17/02/2022

**RE: Details of activities undertaken by Antony Perkins at Moorebank**

On the 15<sup>th</sup> of February, 2022, the ACCC granted an extension to the limited waiver of clause 6.4(a) of the Undertaking enabling Antony Perkins to provide services to Qube with respect to the Moorebank Intermodal and Interstate rail terminal.

During the last reporting period, Antony provided the following services with respect to this project;

- Interfacing with potential customers;
- Terminal design and interface advice;
- Changes to the interstate container rail terminal and shunting yard design;
- Reviewing lease terms with proposed operator.

There were no breaches or potential breaches of Clause 6.



**Vincent Macheda**  
General Manager

P: +61 3 8698 6915 | F: +61 3 8698 6985 | M: 0434 074 605  
E: [Vincent.Macheda@aaterminals.com.au](mailto:Vincent.Macheda@aaterminals.com.au) | W: <http://www.aaterminals.com.au>



21/02/2022

**RE: Status of Stevedore License Agreements at AATs Port Kembla and Fisherman Islands facilities.**

**Port Kembla**

AAT currently has valid Stevedore License Agreements (SLA) for the following entities to provide Stevedoring services at AATs Port Kembla facility.

1. Linx Stevedoring Pty Ltd ACN 007 427 652
2. Qube Ports Pty Ltd ACN 123 021 492

The SLA's for both entities have a commencement date of the 1<sup>st</sup> of January 2018 for a 3 year term. Following the expiry of the 3 year term, both entities continue to provide services at AATs Port Kembla facility at under terms of the existing agreement as allowed under clause 2.1 (b) of the SLA. This is a holding over clause that provides access to the terminal past the designated expiry date.

**Fisherman Islands**

AAT currently has valid Stevedore License Agreements (SLA) for the following entities to provide Stevedoring services at AATs Fisherman Islands facility.

1. Linx Stevedoring Pty Ltd ACN 007 427 652
2. Qube Ports Pty Ltd ACN 123 021 492
3. Townsville Marine Logistics Pty Ltd ACN 21 625 440

AAT has a fully executed SLA with Townsville Marine Logistics with a commencement date of 1<sup>st</sup> of January 2022 for a 3 year term.

The SLA's for both Linx Stevedoring Pty Ltd and Qube Ports Pty Ltd have a commencement date of the 1<sup>st</sup> of January 2018 with a 3 year term. Following the expiry of the 3 year term, both entities continue to provide services at AAT's Fisherman Islands facility at under terms of the existing Agreement as allowed under clause 2.1 (b) of the SLA. This is a holding over clause that provides access to the terminal past the designated expiry date.



**Vincent Macheda**  
General Manager

P: +61 3 8698 6915 | F: +61 3 8698 6985 | M: 0434 074 605  
E: [Vincent.Macheda@aaterminals.com.au](mailto:Vincent.Macheda@aaterminals.com.au) | W: <http://www.aaterminals.com.au>